

The logo for Loyal Ceramic is centered on a dark navy blue background. The word "LOYAL" is in a large, white, sans-serif font. The second 'O' is replaced by a stylized graphic consisting of a yellow semi-circle on the left and a white semi-circle on the right. The dot on the 'A' is a small yellow circle. Below "LOYAL" is the word "CERAMIC" in a smaller, white, sans-serif font. A thin white horizontal line precedes the "C" in "CERAMIC". The background features several geometric patterns: a large, faint, light brown diamond shape on the left; a series of concentric, light brown chevron shapes at the bottom; and two diagonal bands of small, light brown dots on the right and bottom-left sides.

LOYAL
— CERAMIC

HEAVY DUTY PARKING TILES
400 X 400 MM
300 X 300 MM

The ceramic Parking tiles market is expected best. design to witness strong growth in the forecast period. The growth of the ceramic tiles industry has been majorly driven by the technological changes which involve process invention, adoption, and diffusion of new. techniques in the industry. Additionally, the high mobility of. specialized workers and salesmen has also guided the development of the ceramic tiles industry.





HEAVY DUTY PARKING



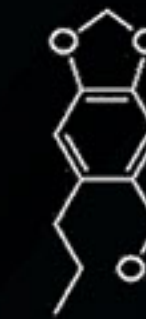
stain resistant



rectified



resistant to load



resistant to acid
and chemicals



suitable for car parking



anti slip

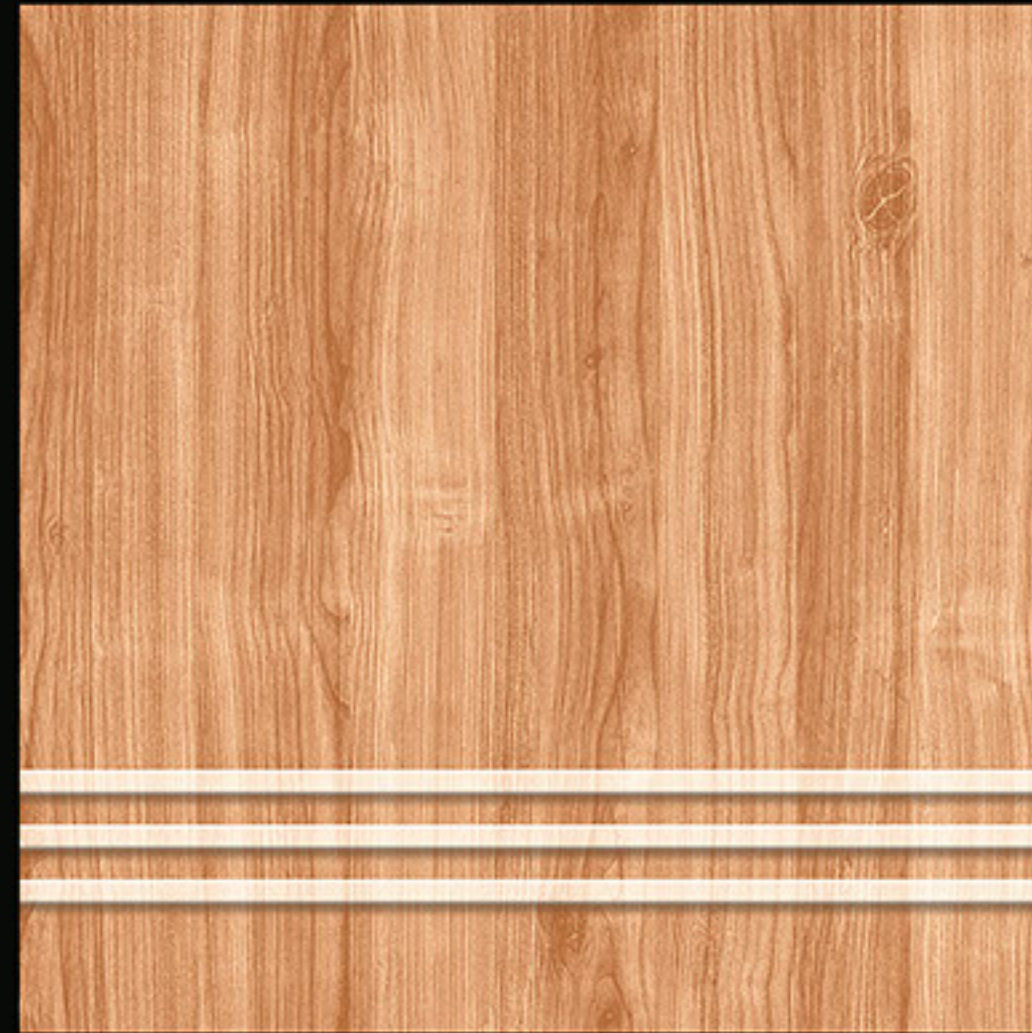
HEAVY DUTY PARKING TILES

400 X 400 MM

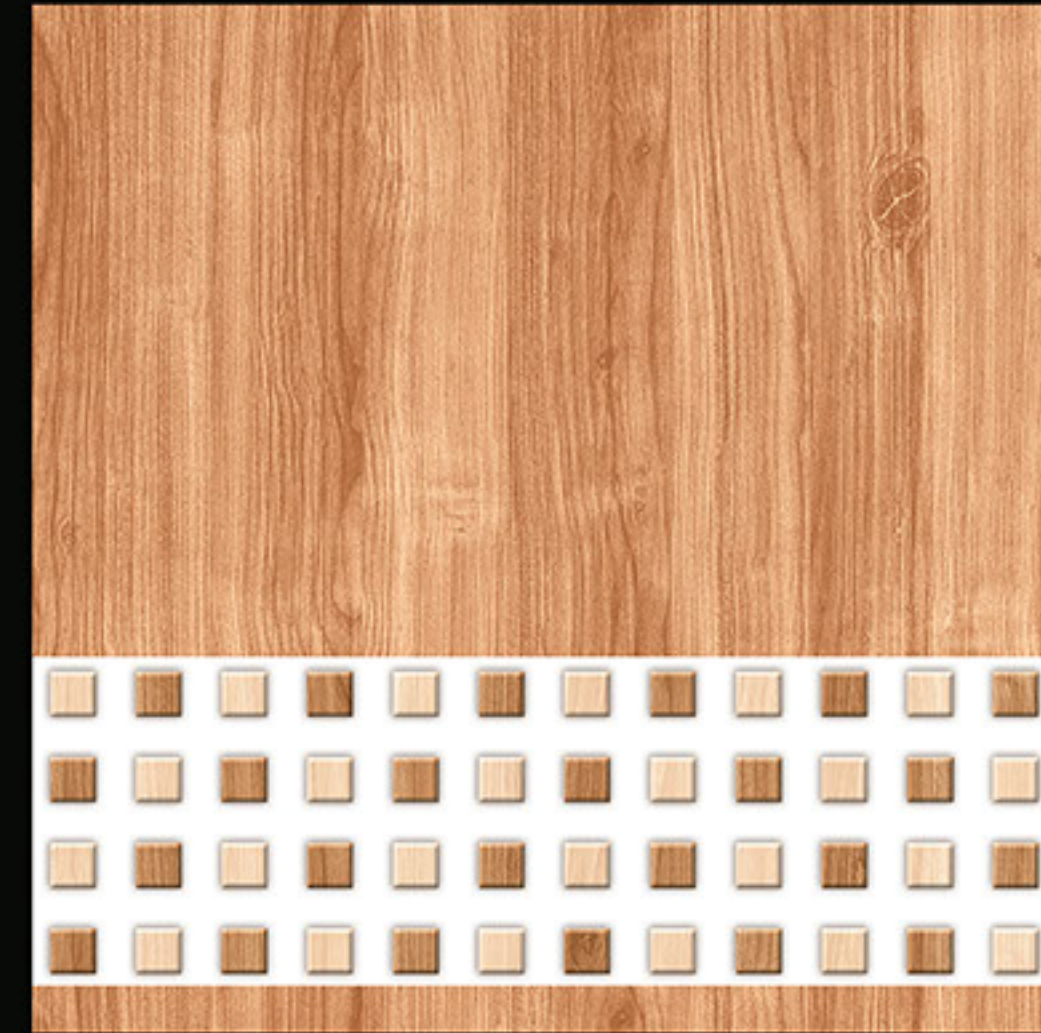
300 X 300 MM



DESIGN NO-1601



DESIGN NO-2601



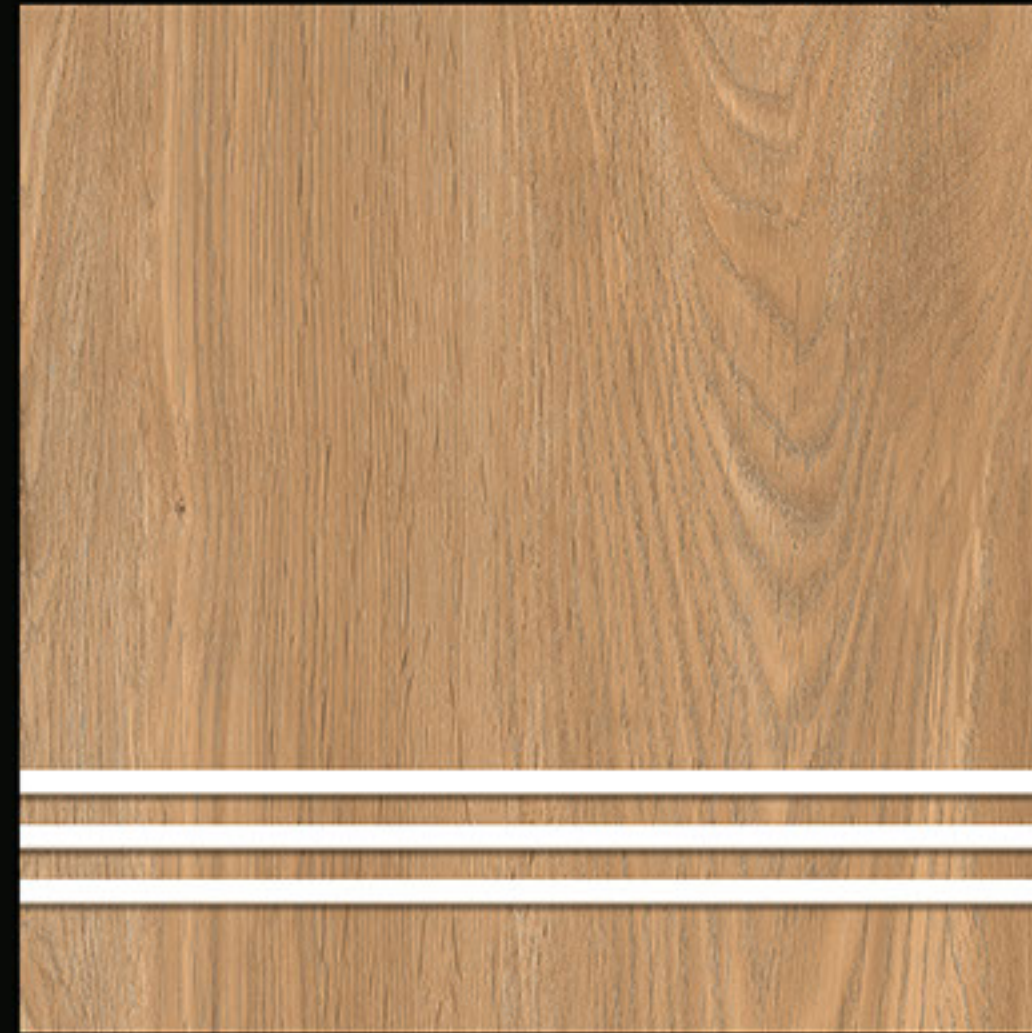
DESIGN NO-3301



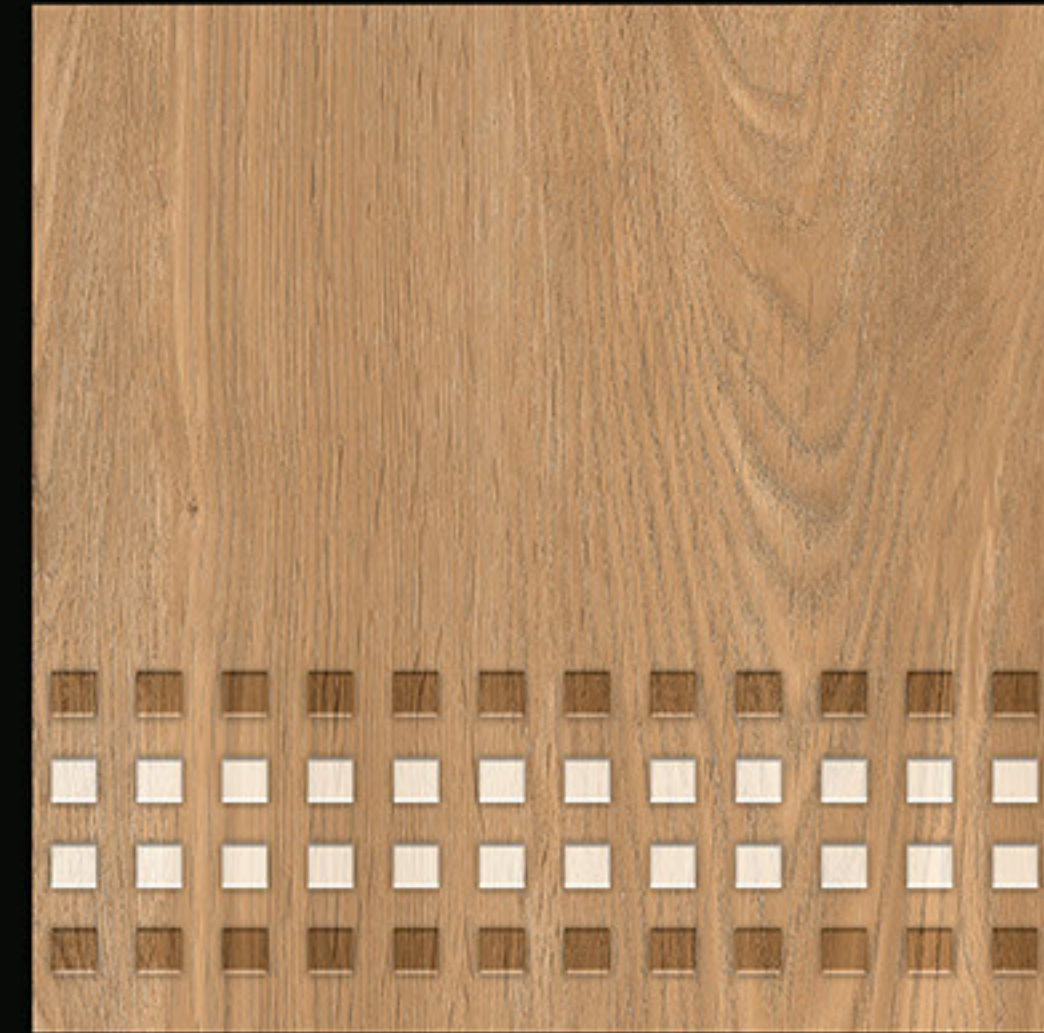
FULL BODY
300x300mm
VITRIFIED PARKING TILES



DESIGN NO-1602



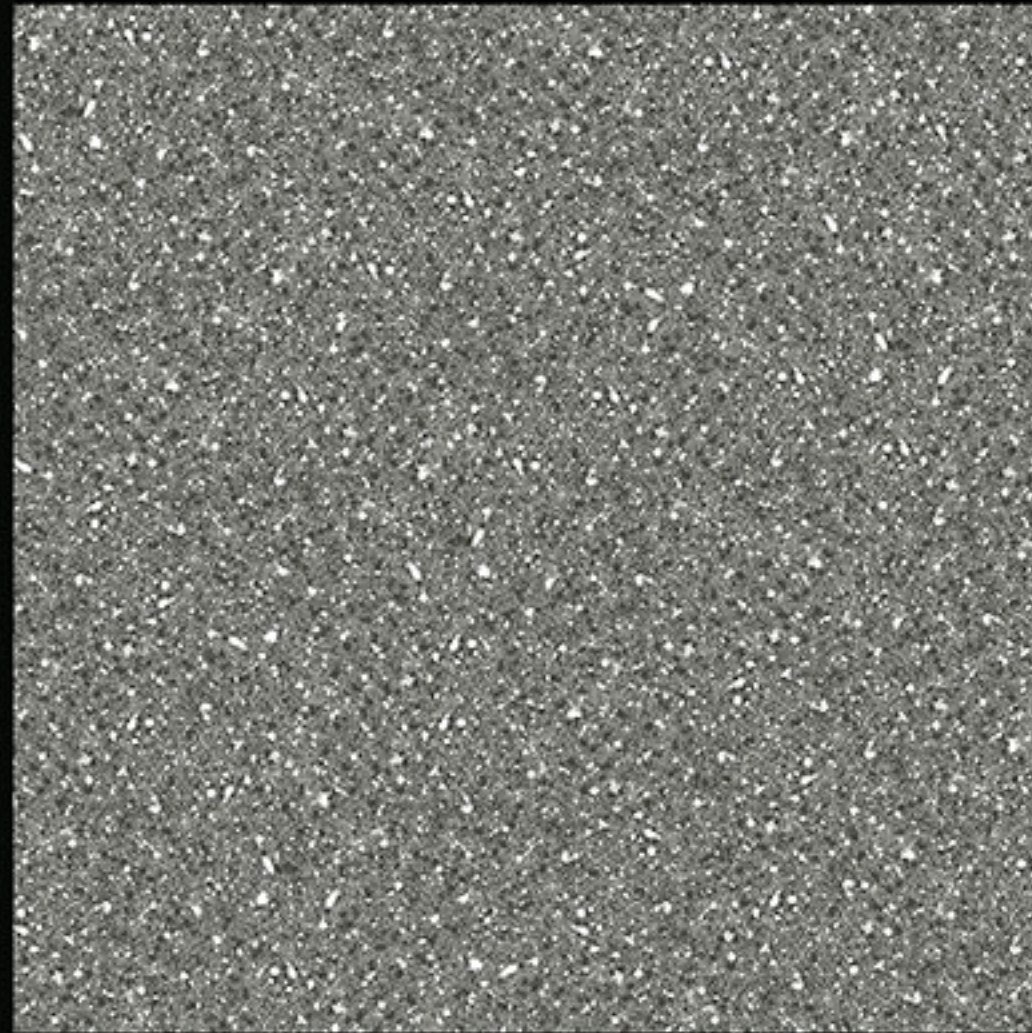
DESIGN NO-2602



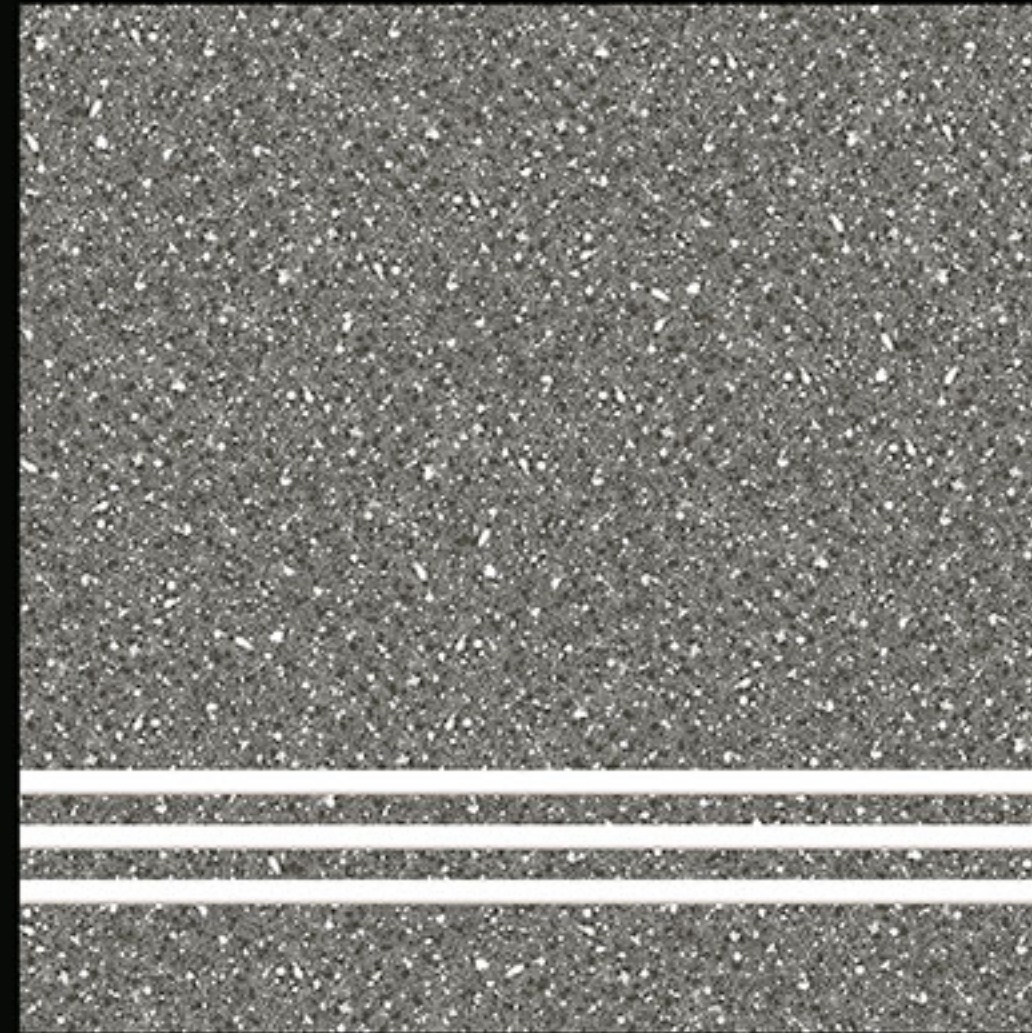
DESIGN NO-3302



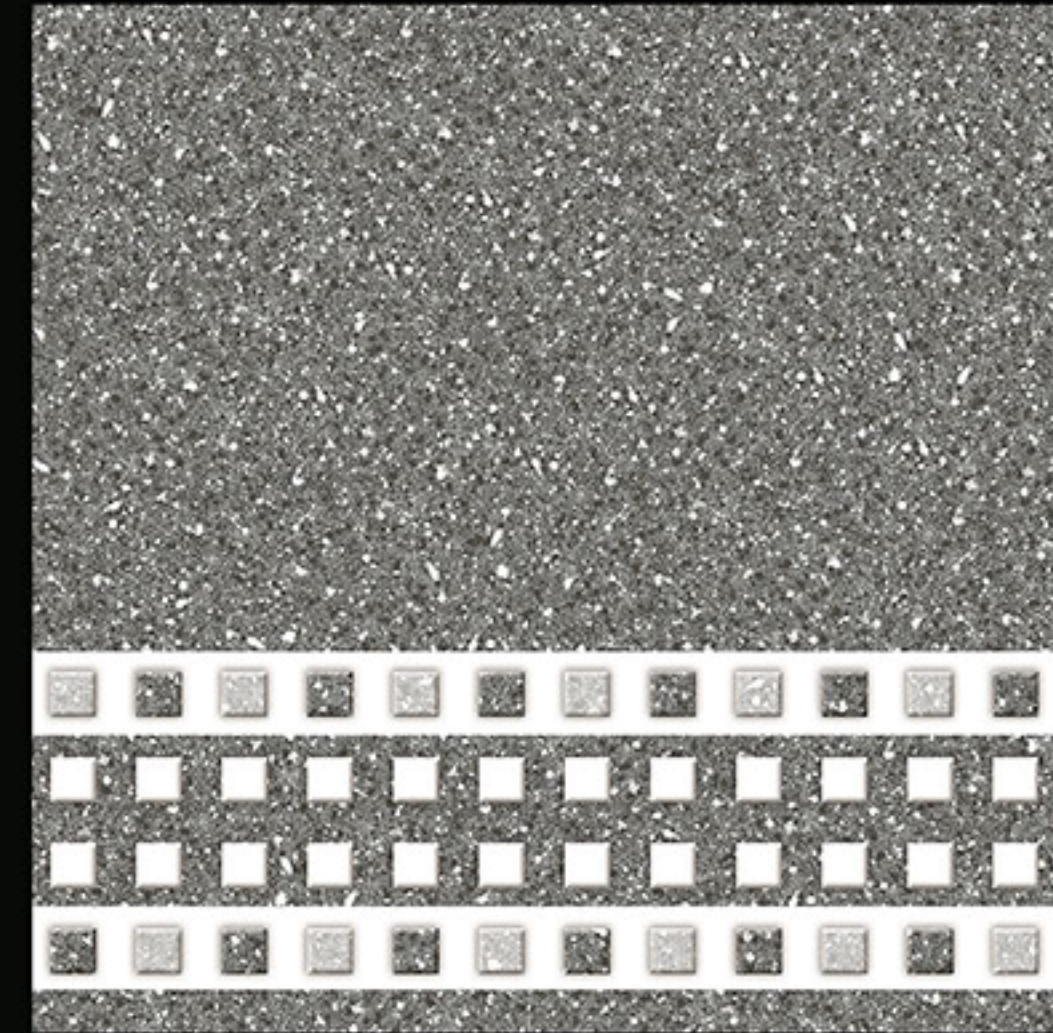
FULL BODY
300x300mm
VITRIFIED PARKING TILES



DESIGN NO-1603



DESIGN NO-2603

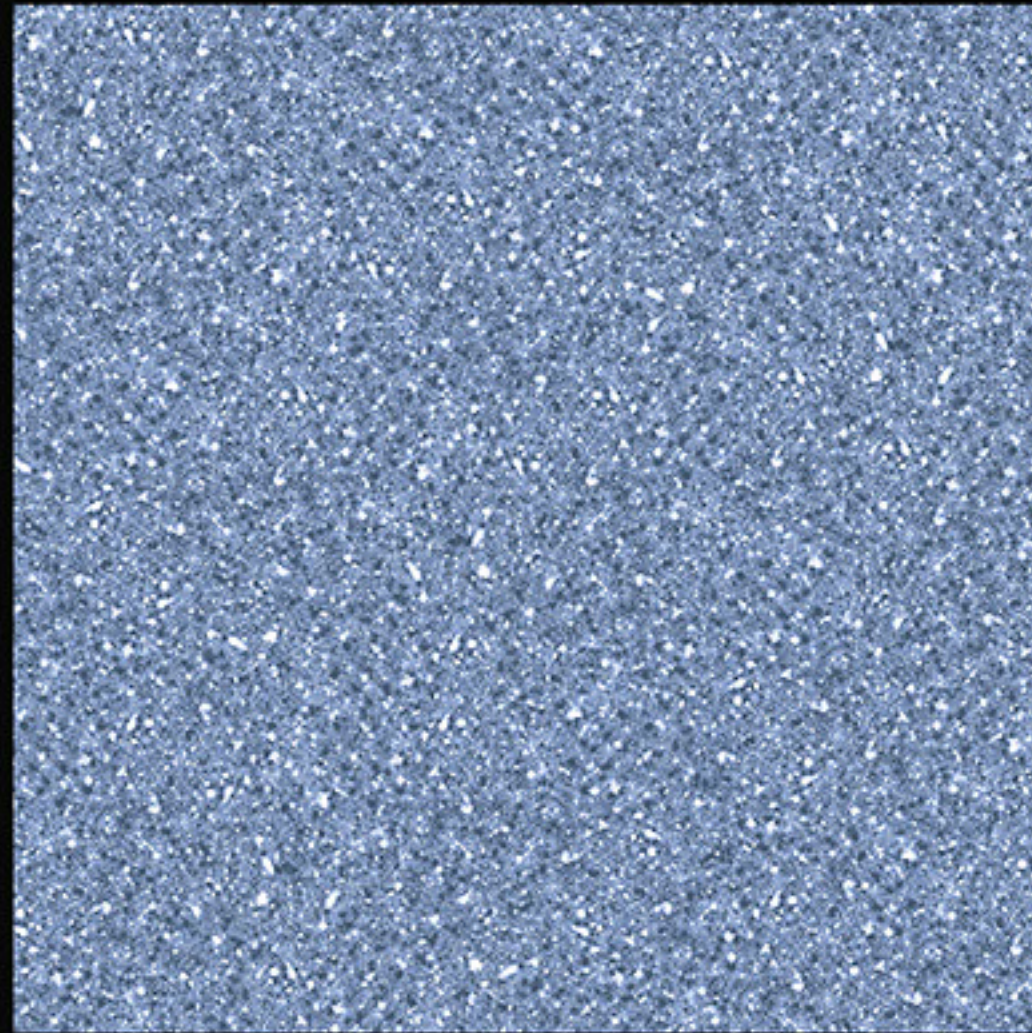


DESIGN NO-3303

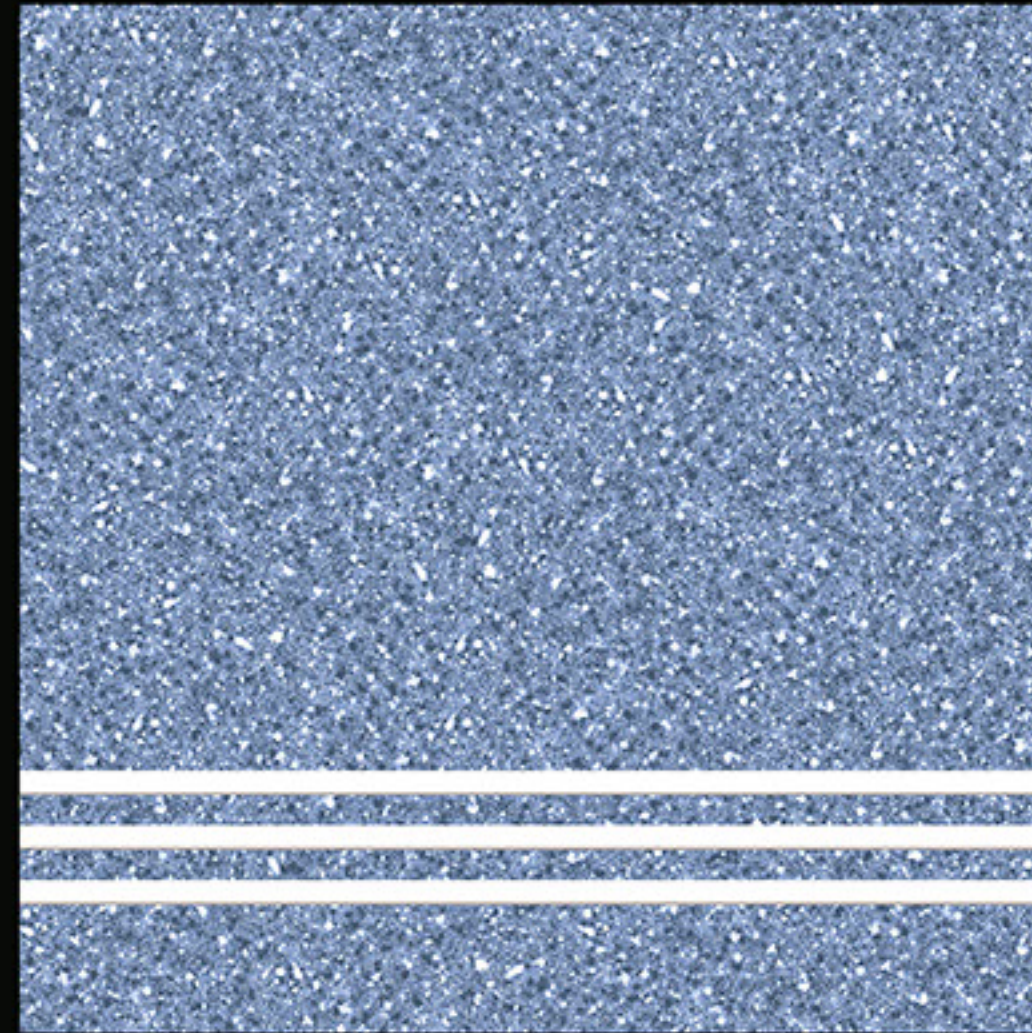
FULL BODY
300x300mm
VITRIFIED PARKING TILES



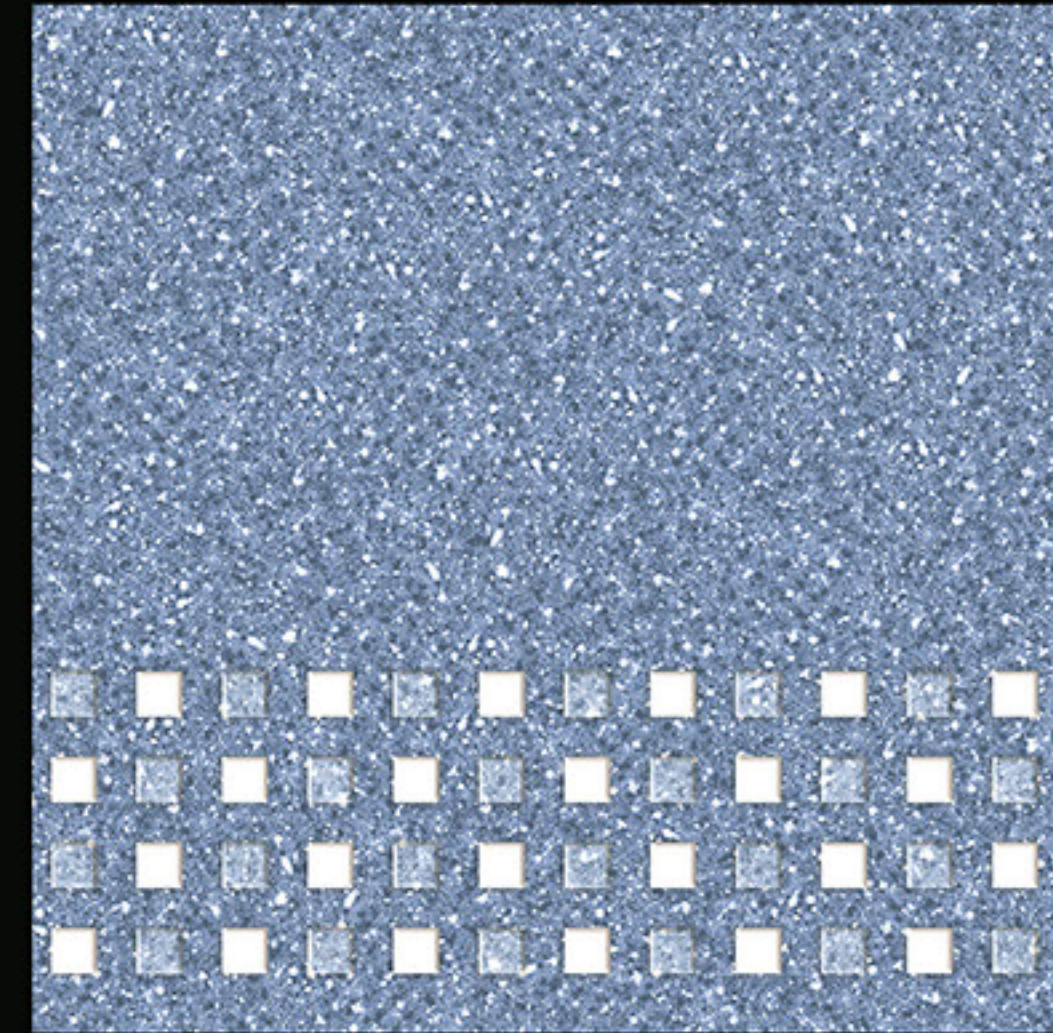
FULL BODY
300x300mm
VITRIFIED PARKING TILES



DESIGN NO-1604



DESIGN NO-2604



DESIGN NO-3304

LOYAL
— C E R A M I C



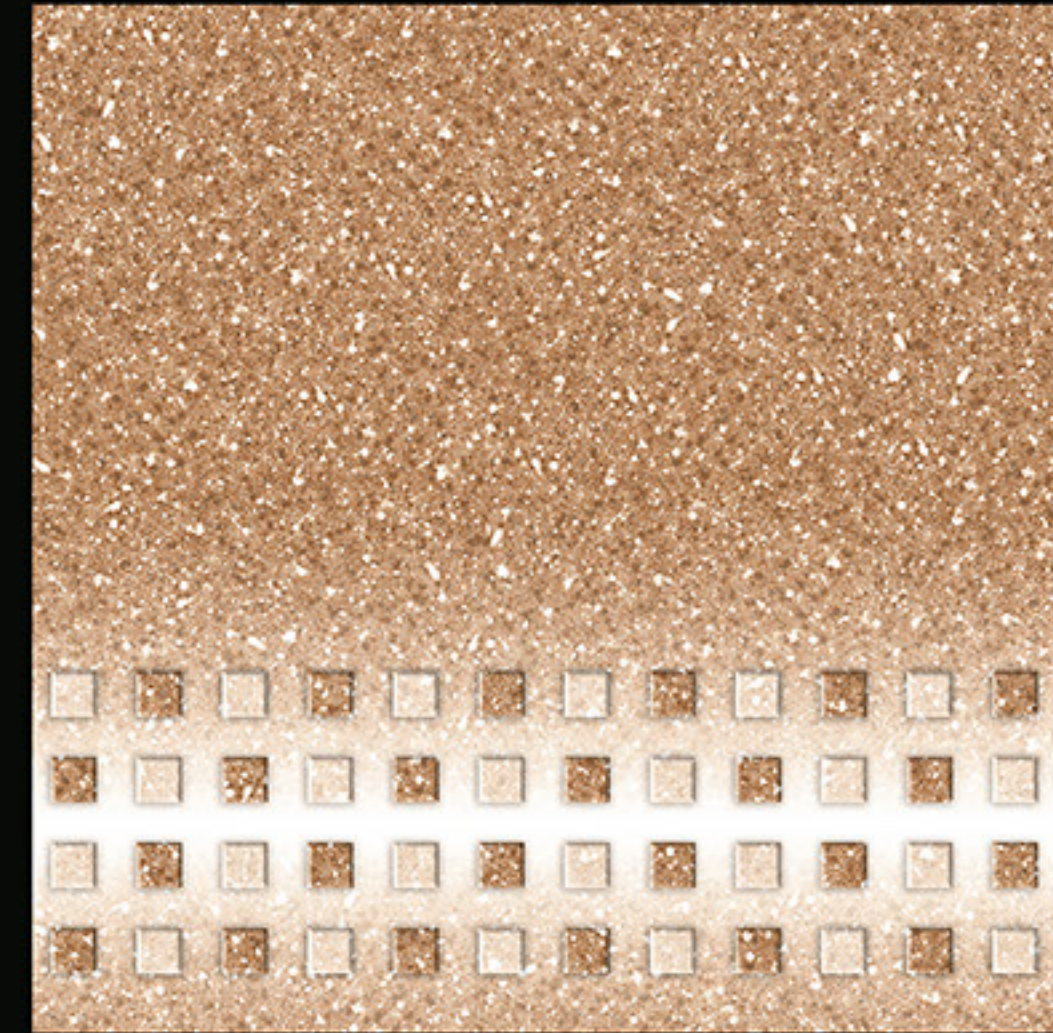
FULL BODY
300x300mm
VITRIFIED PARKING TILES



DESIGN NO-1605



DESIGN NO-2605



DESIGN NO-3305

FULL BODY
300x300mm
VITRIFIED PARKING TILES

LOYAL
— C E R A M I C



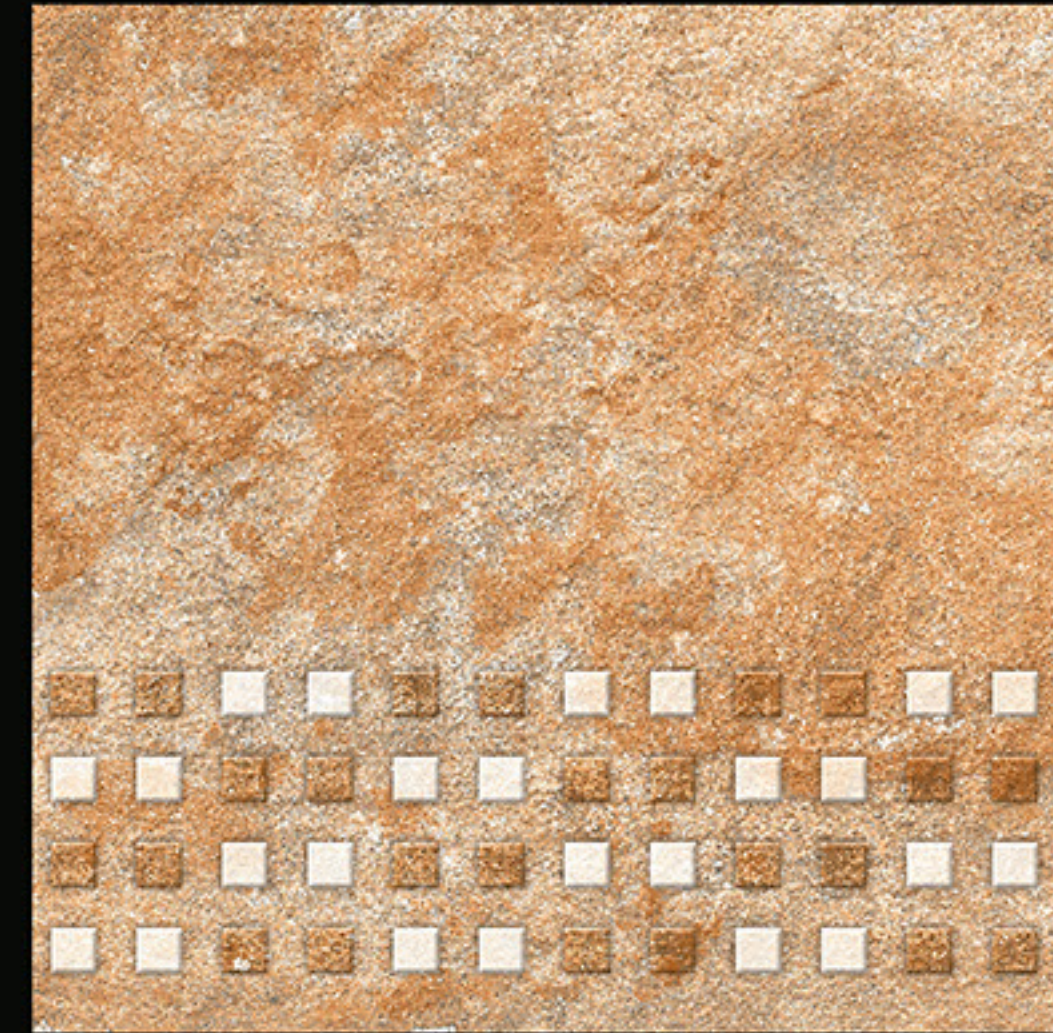
FULL BODY
300x300mm
VITRIFIED PARKING TILES



DESIGN NO-1606



DESIGN NO-2606



DESIGN NO-3306



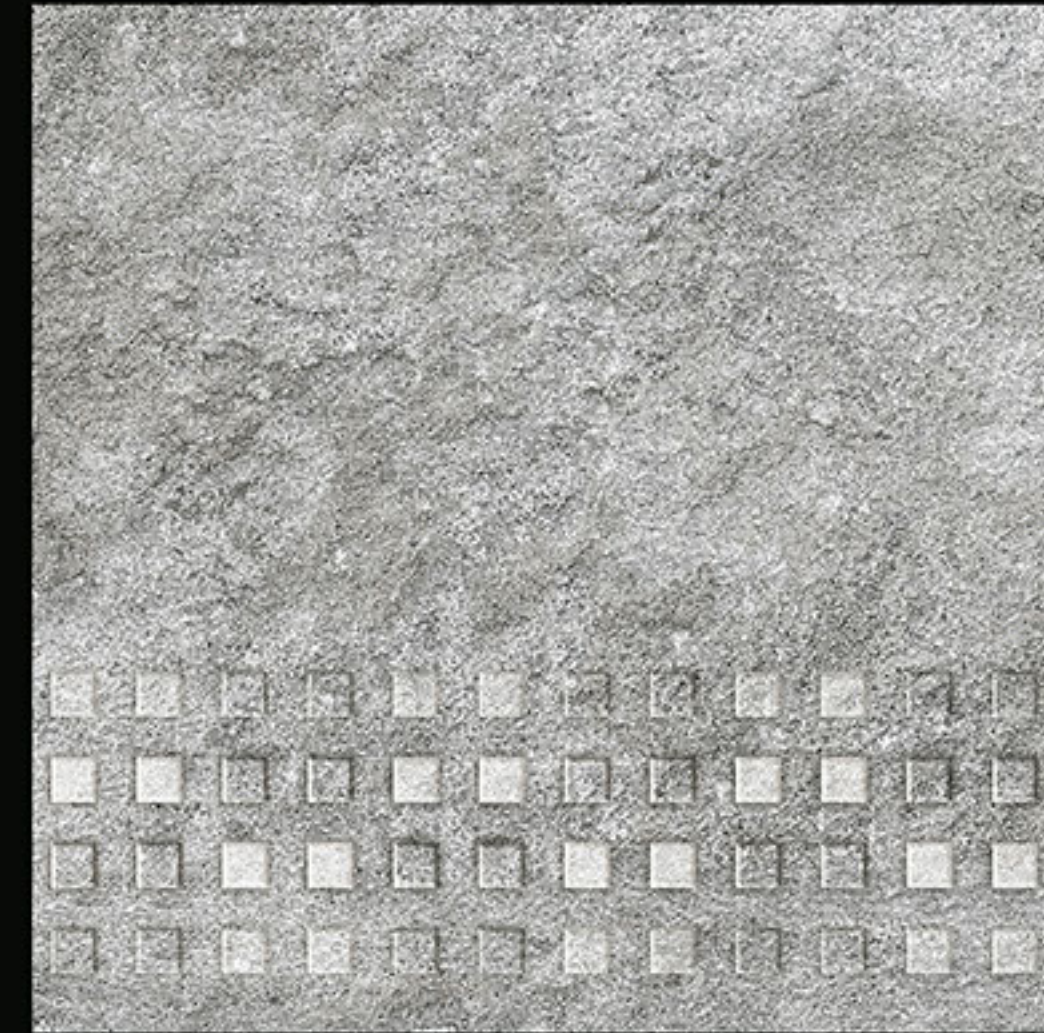
FULL BODY
300x300mm
VITRIFIED PARKING TILES



DESIGN NO-1607



DESIGN NO-2607



DESIGN NO-3307

LOYAL
— C E R A M I C



FULL BODY
300x300mm
VITRIFIED PARKING TILES



DESIGN NO-1608



DESIGN NO-2608



DESIGN NO-3308

FULL BODY
300x300mm
VITRIFIED PARKING TILES

LOYAL
— C E R A M I C



FULL BODY
300x300mm
VITRIFIED PARKING TILES



DESIGN NO-1609



DESIGN NO-2609



DESIGN NO-3309



FULL BODY
300x300mm
VITRIFIED PARKING TILES



DESIGN NO-1610



DESIGN NO-2610



DESIGN NO-3310



FULL BODY
300x300mm
VITRIFIED PARKING TILES



DESIGN NO-1611



DESIGN NO-2611



DESIGN NO-3311



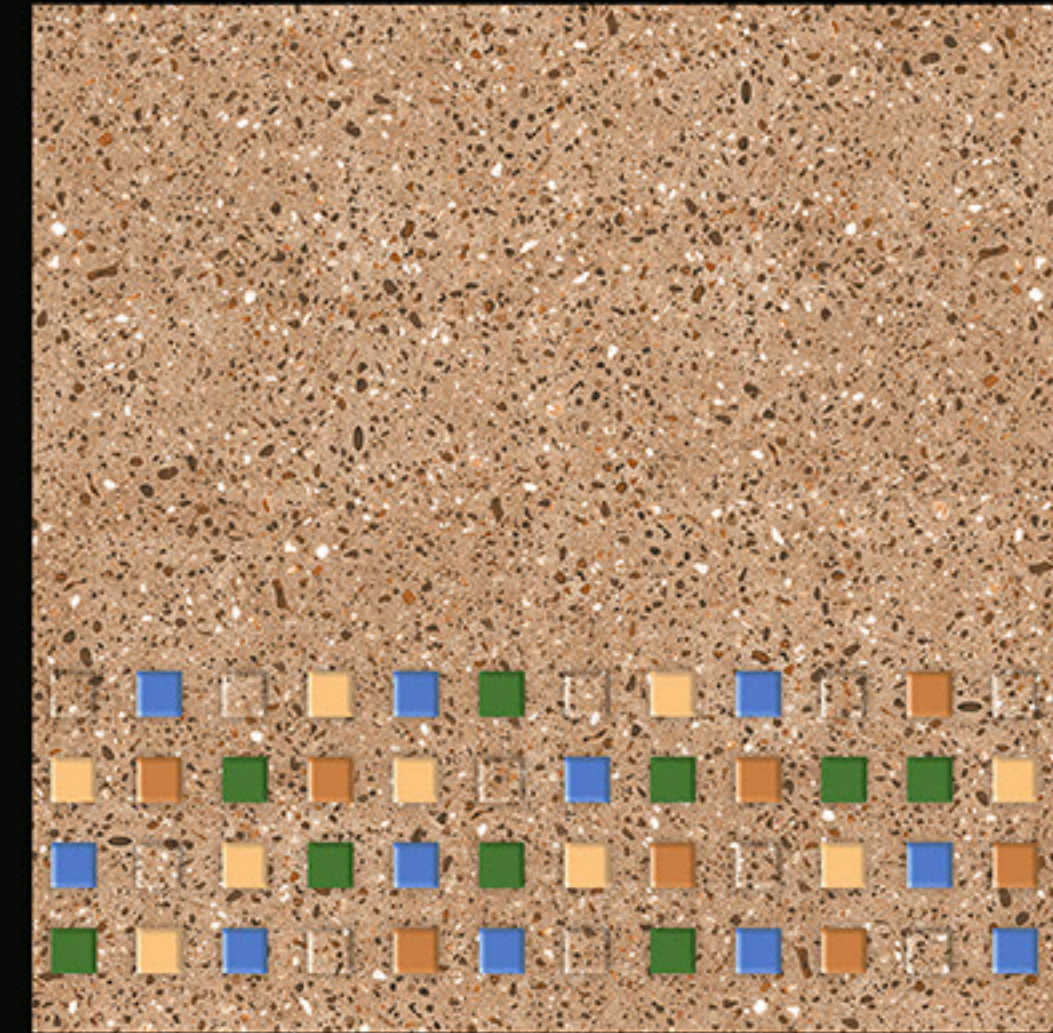
FULL BODY
300x300mm
VITRIFIED PARKING TILES



DESIGN NO-1612



DESIGN NO-2612

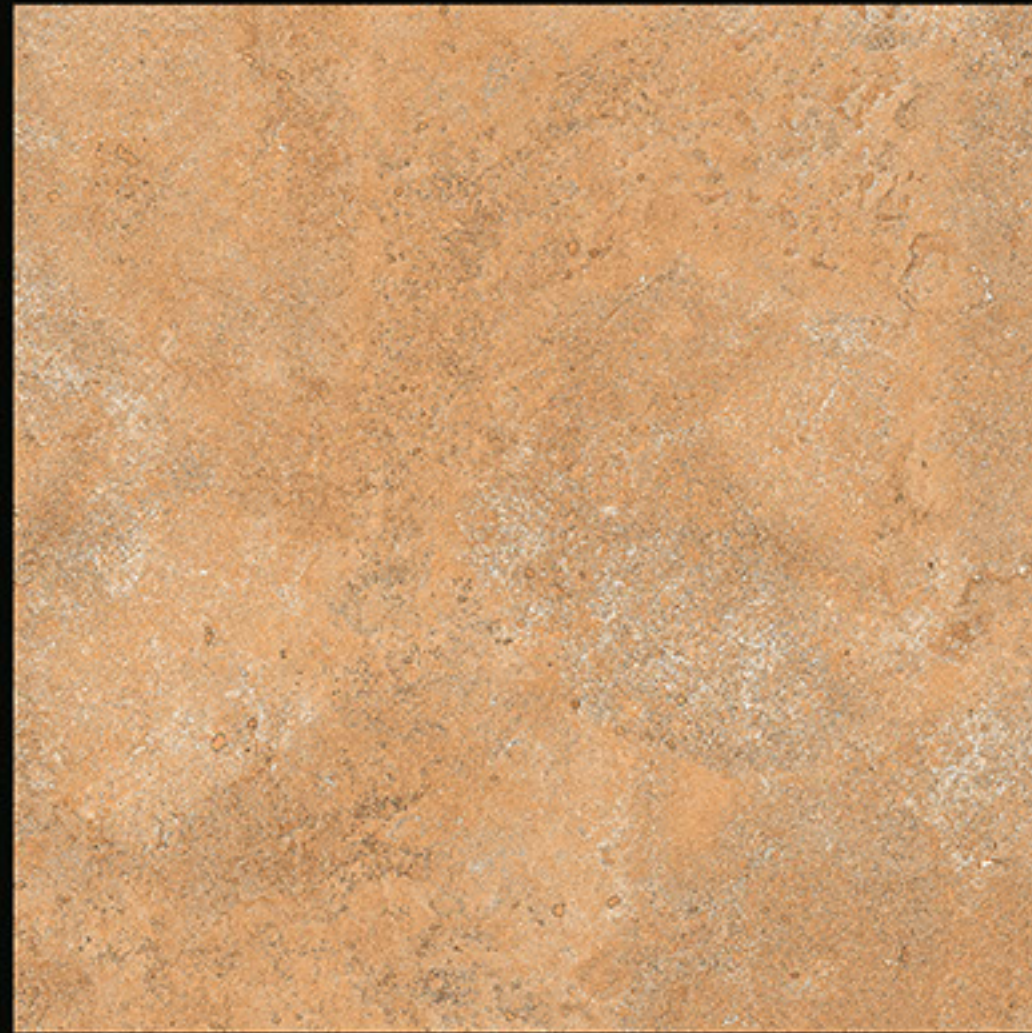


DESIGN NO-3312

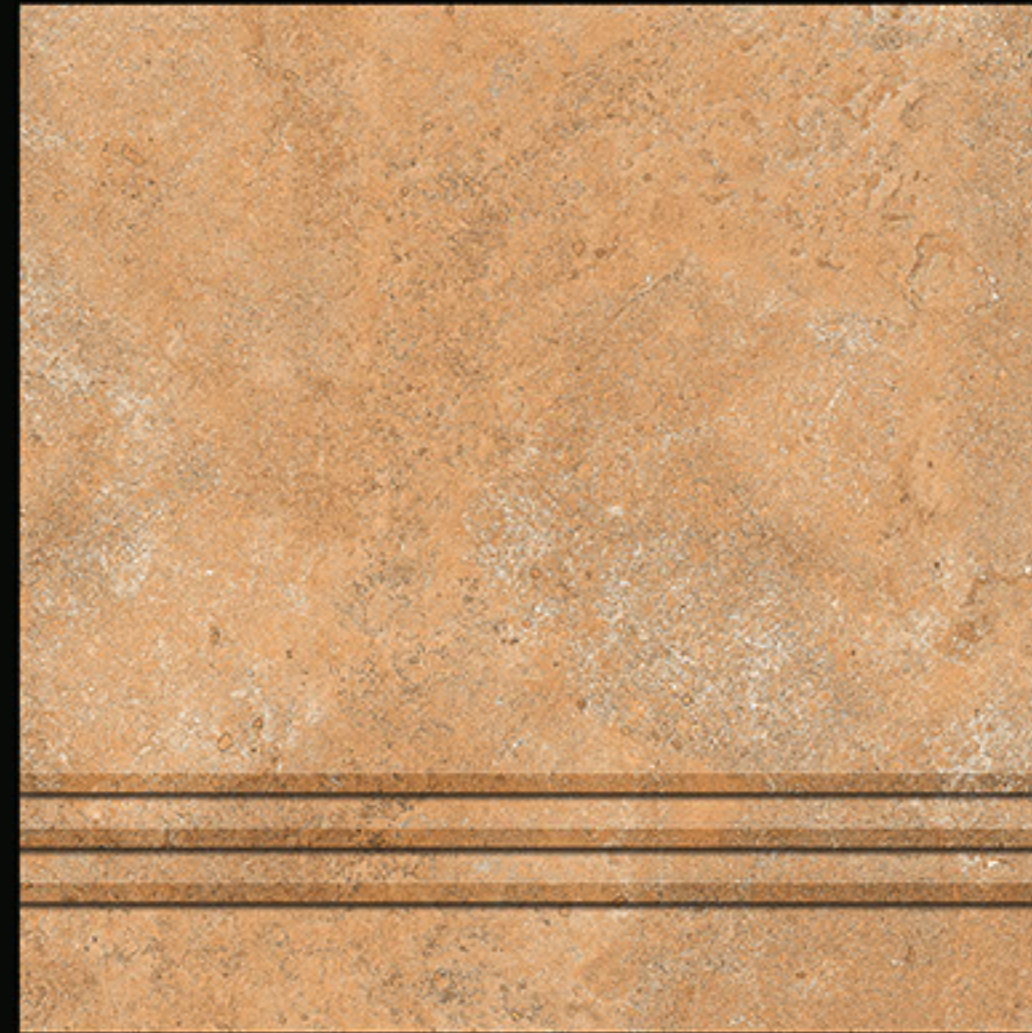
LOYAL
— C E R A M I C



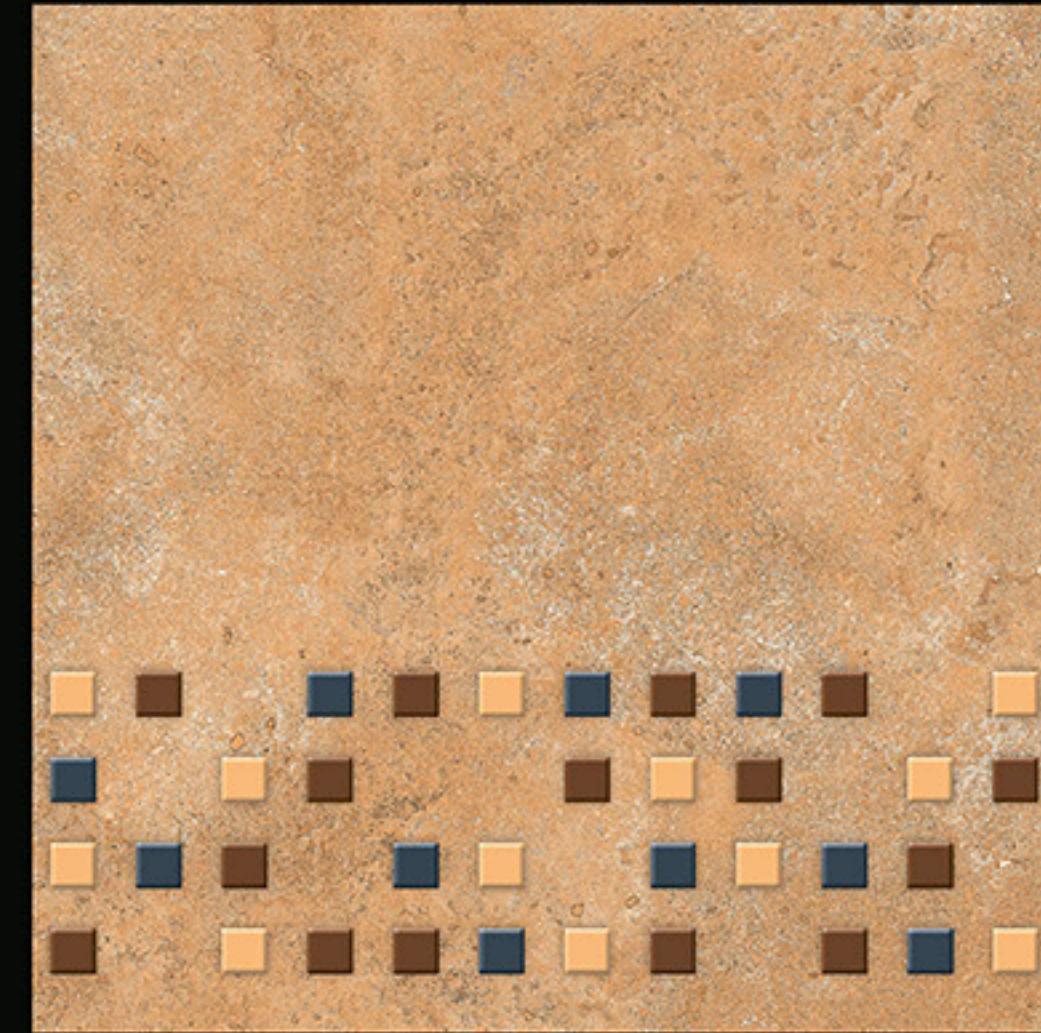
FULL BODY
300x300mm
VITRIFIED PARKING TILES



DESIGN NO-1613



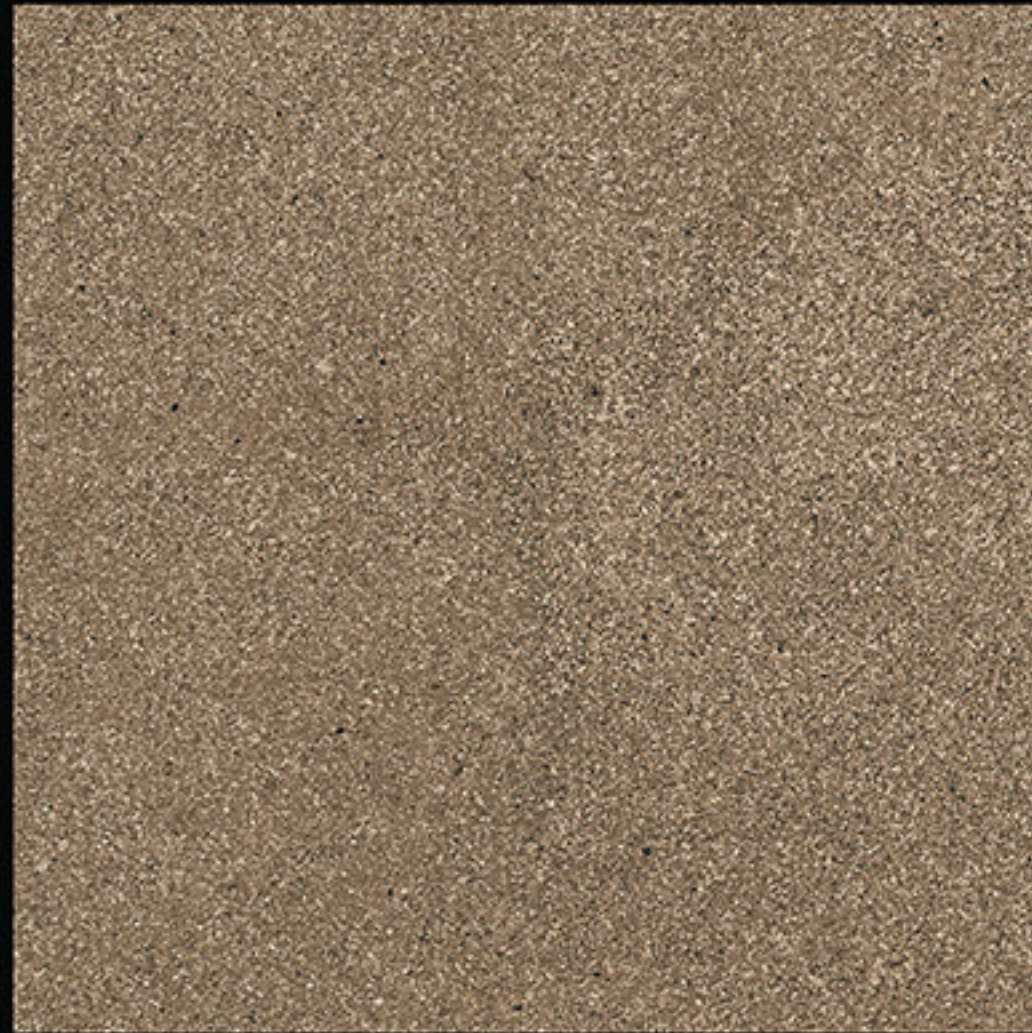
DESIGN NO-2613



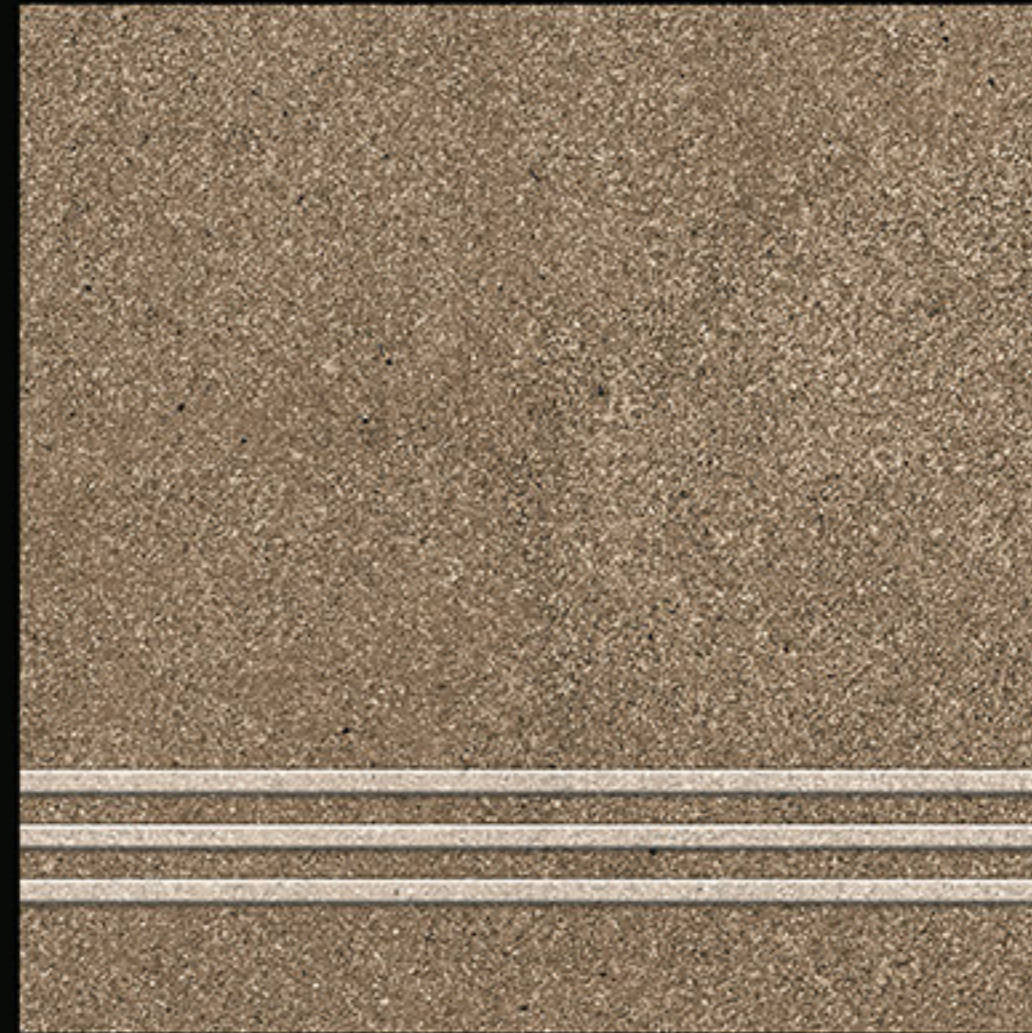
DESIGN NO-3313



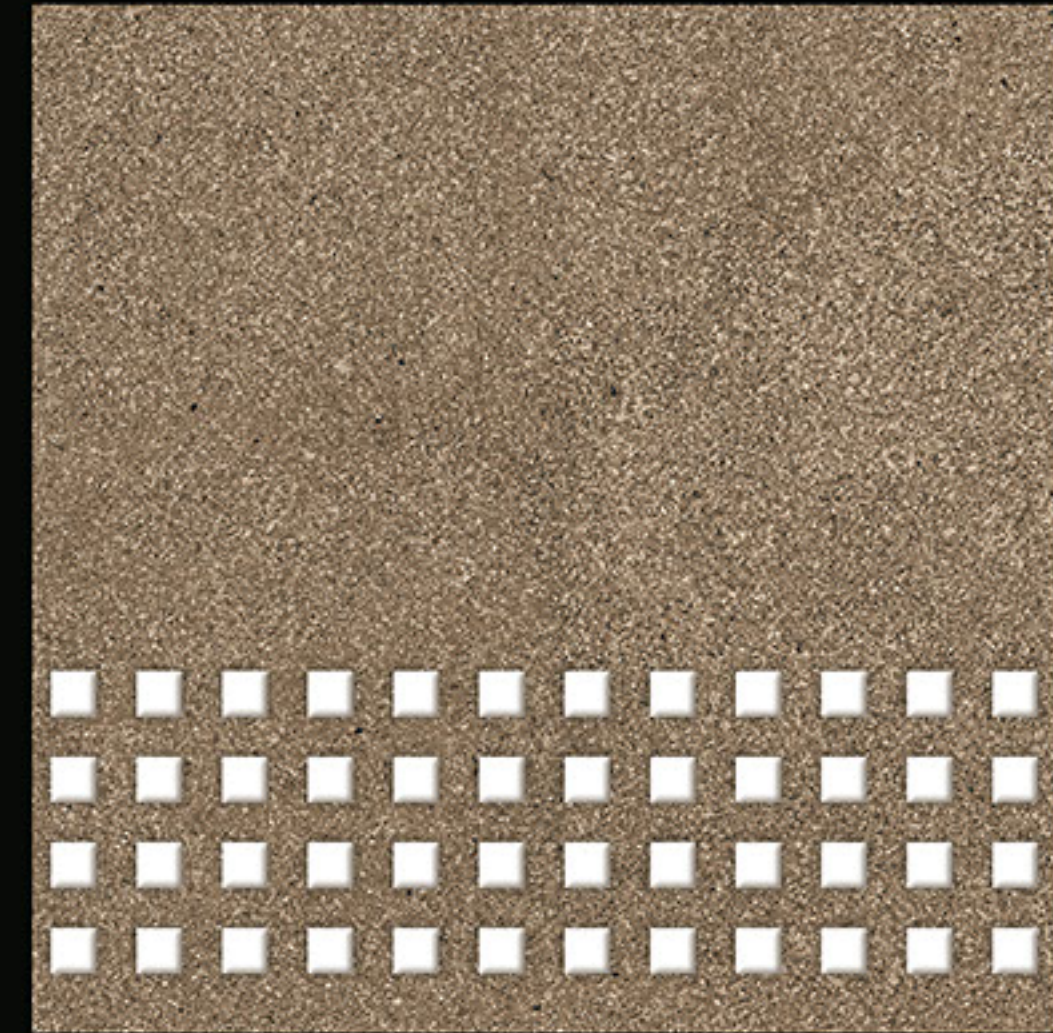
FULL BODY
300x300mm
VITRIFIED PARKING TILES



DESIGN NO-1614



DESIGN NO-2614

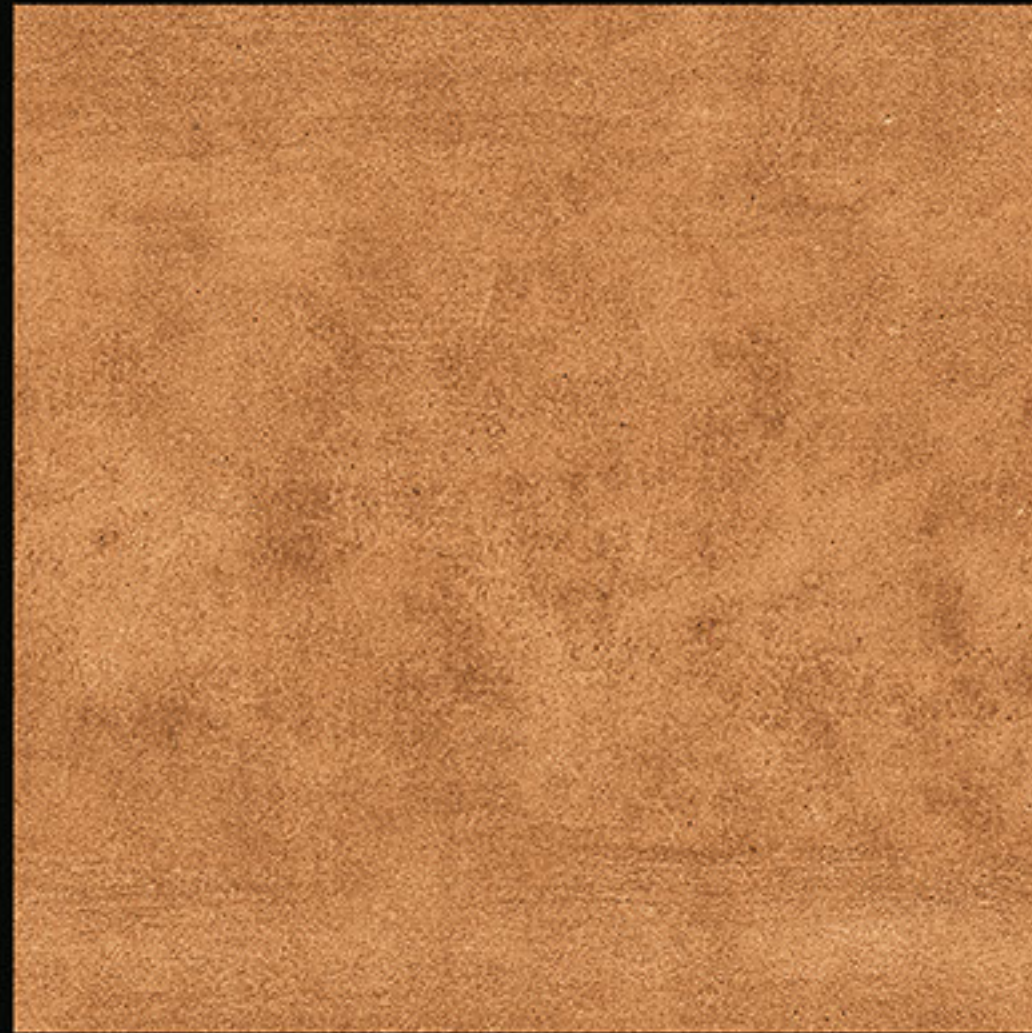


DESIGN NO-3314

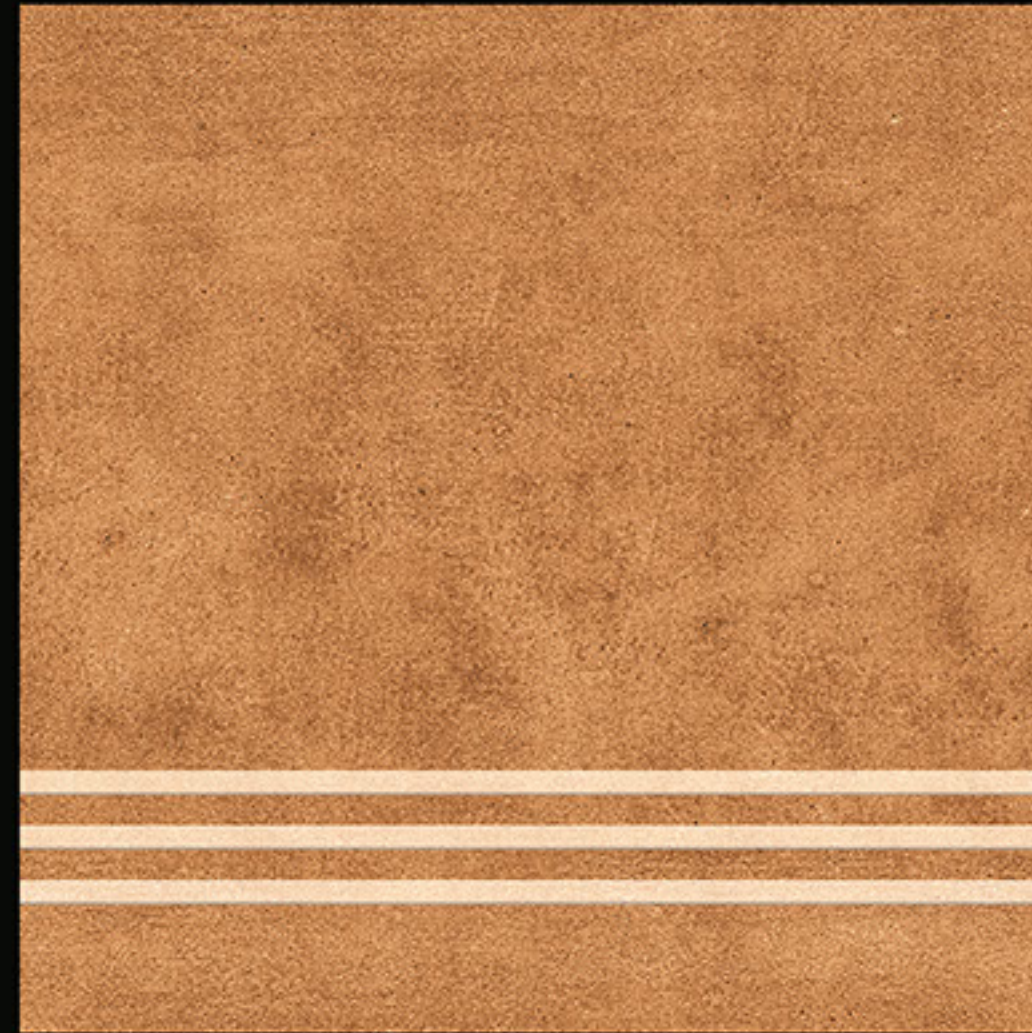
LOYAL
— C E R A M I C



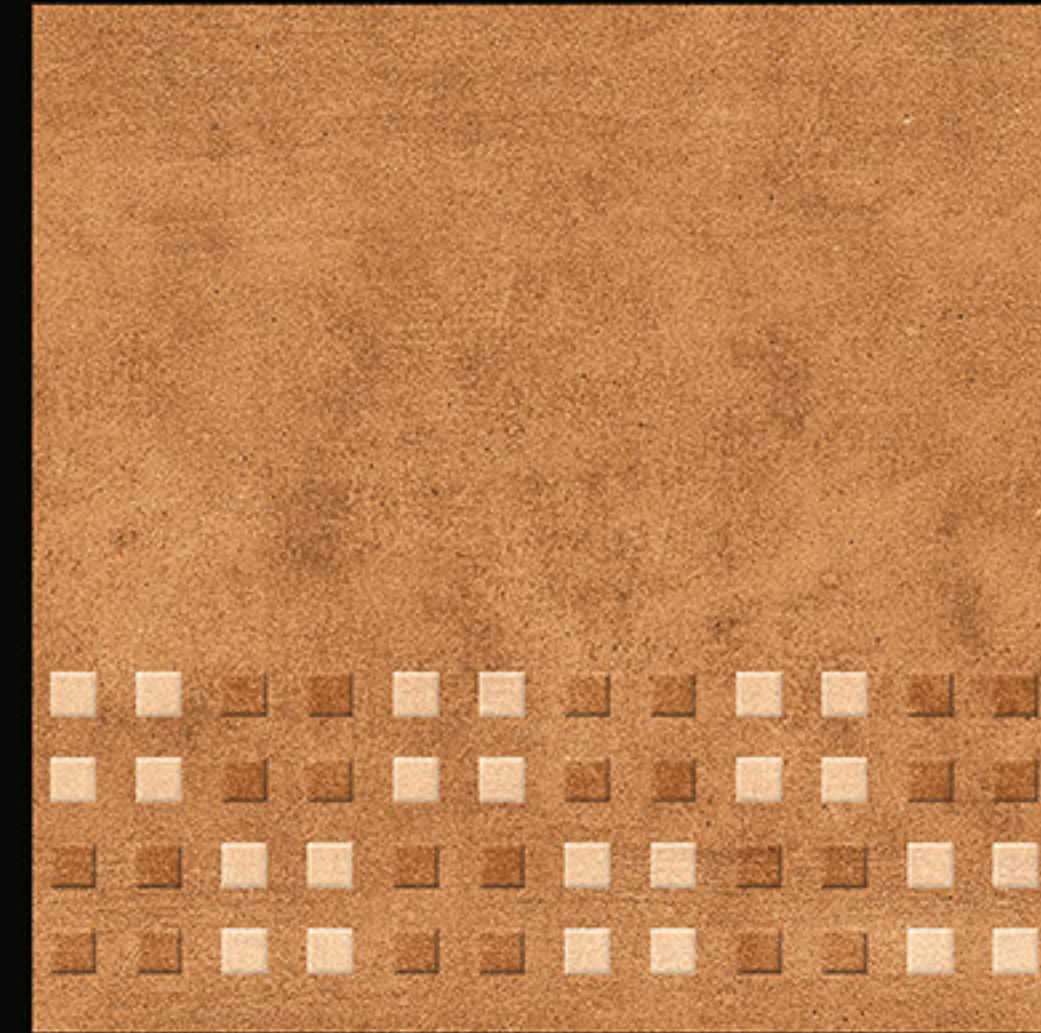
FULL BODY
300x300mm
VITRIFIED PARKING TILES



DESIGN NO-1615



DESIGN NO-2615



DESIGN NO-3315

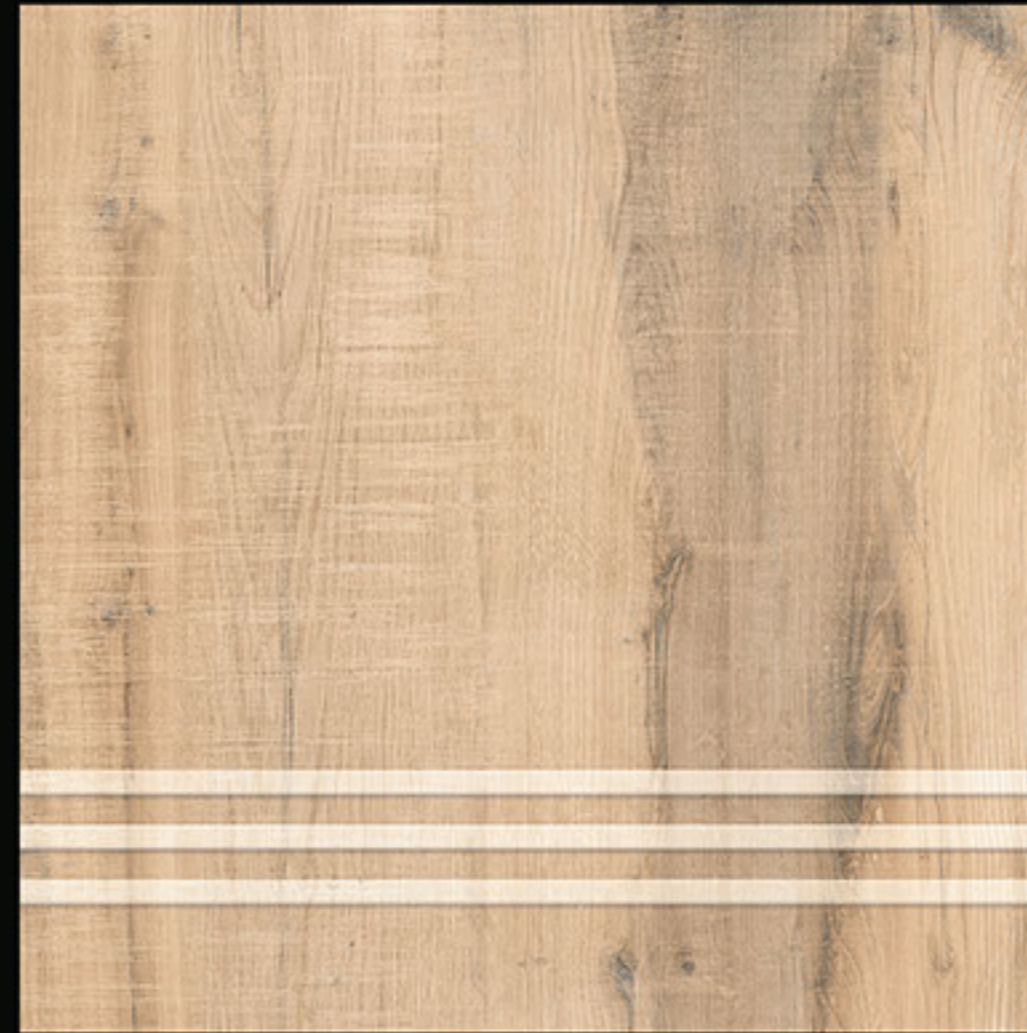
LOYAL
— C E R A M I C



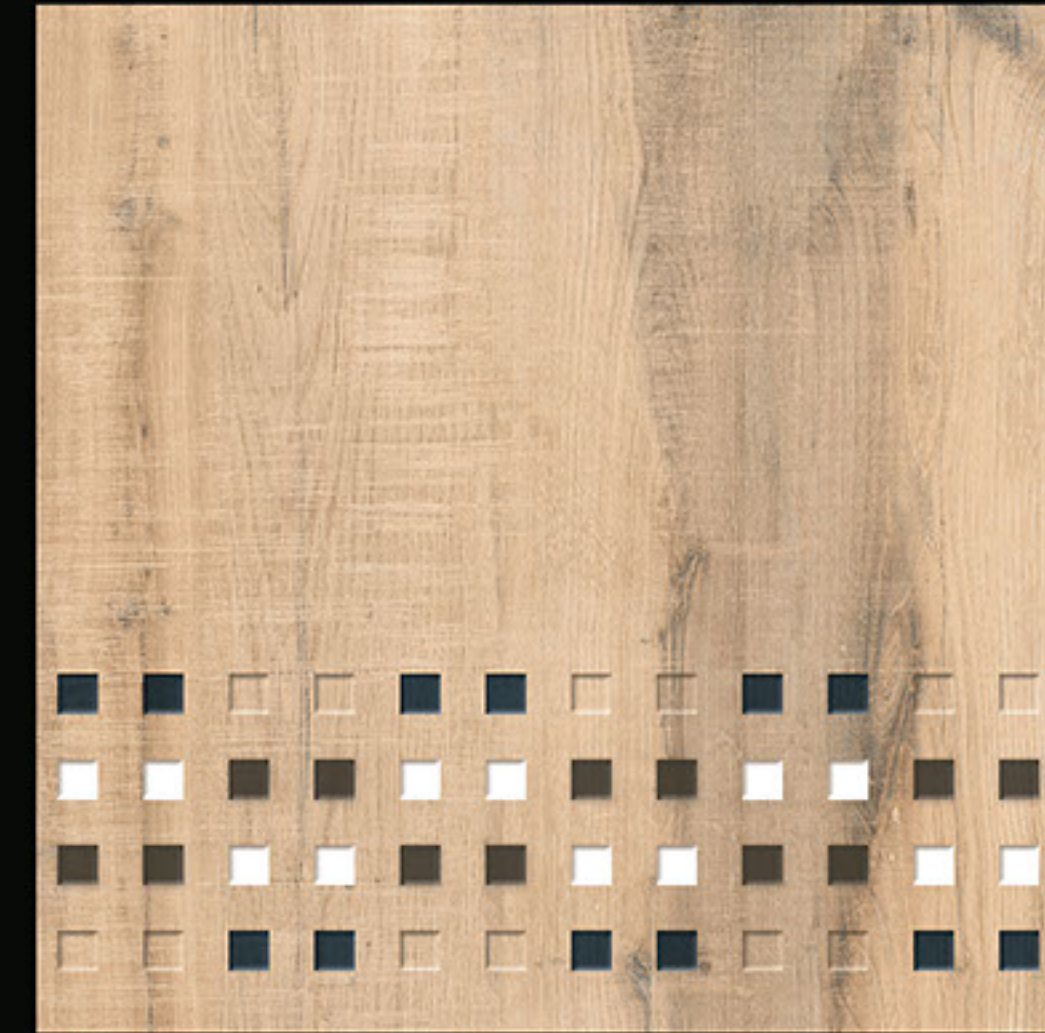
FULL BODY
300x300mm
VITRIFIED PARKING TILES



DESIGN NO-1616



DESIGN NO-2616



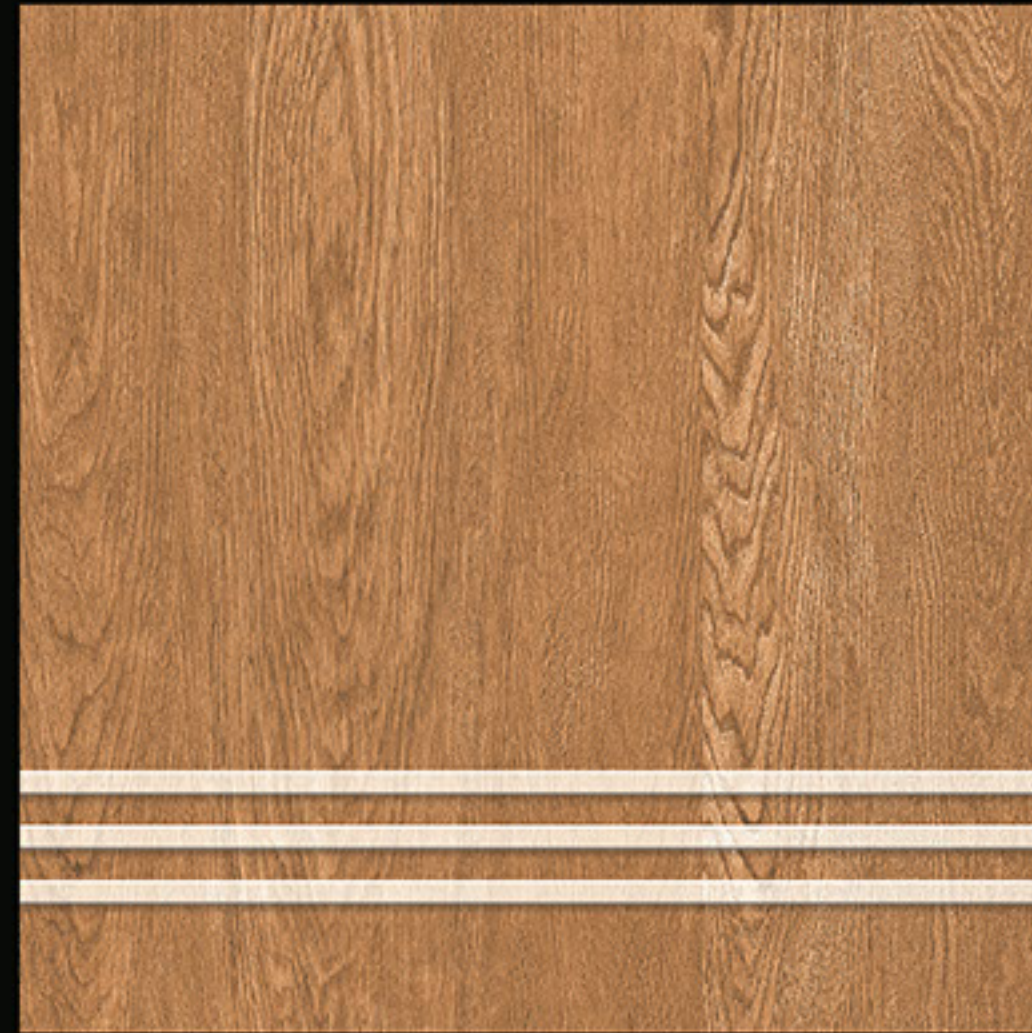
DESIGN NO-3316



FULL BODY
300x300mm
VITRIFIED PARKING TILES



DESIGN NO-1617



DESIGN NO-2617



DESIGN NO-3317



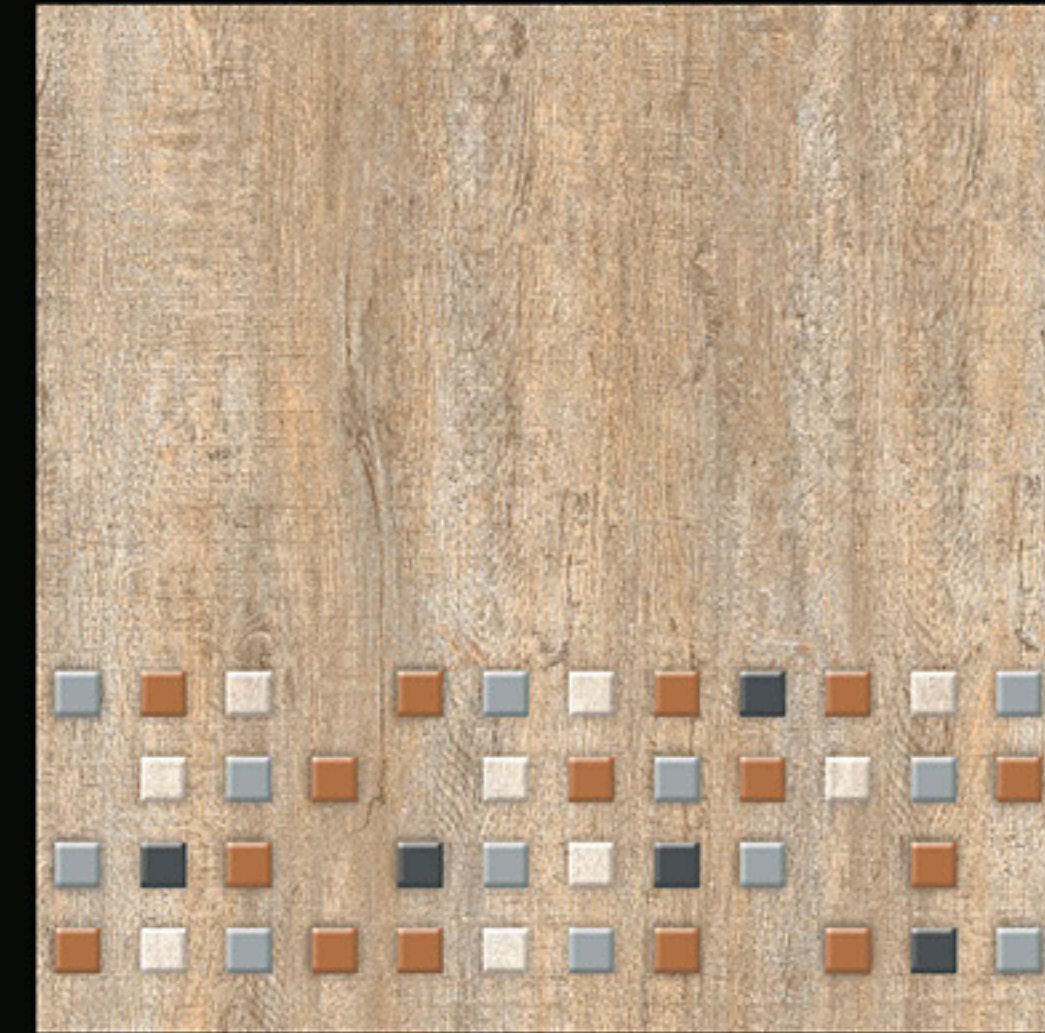
FULL BODY
300x300mm
VITRIFIED PARKING TILES



DESIGN NO-1618



DESIGN NO-2618



DESIGN NO-3318



FULL BODY
300x300mm
VITRIFIED PARKING TILES



DESIGN NO-1619



DESIGN NO-2619

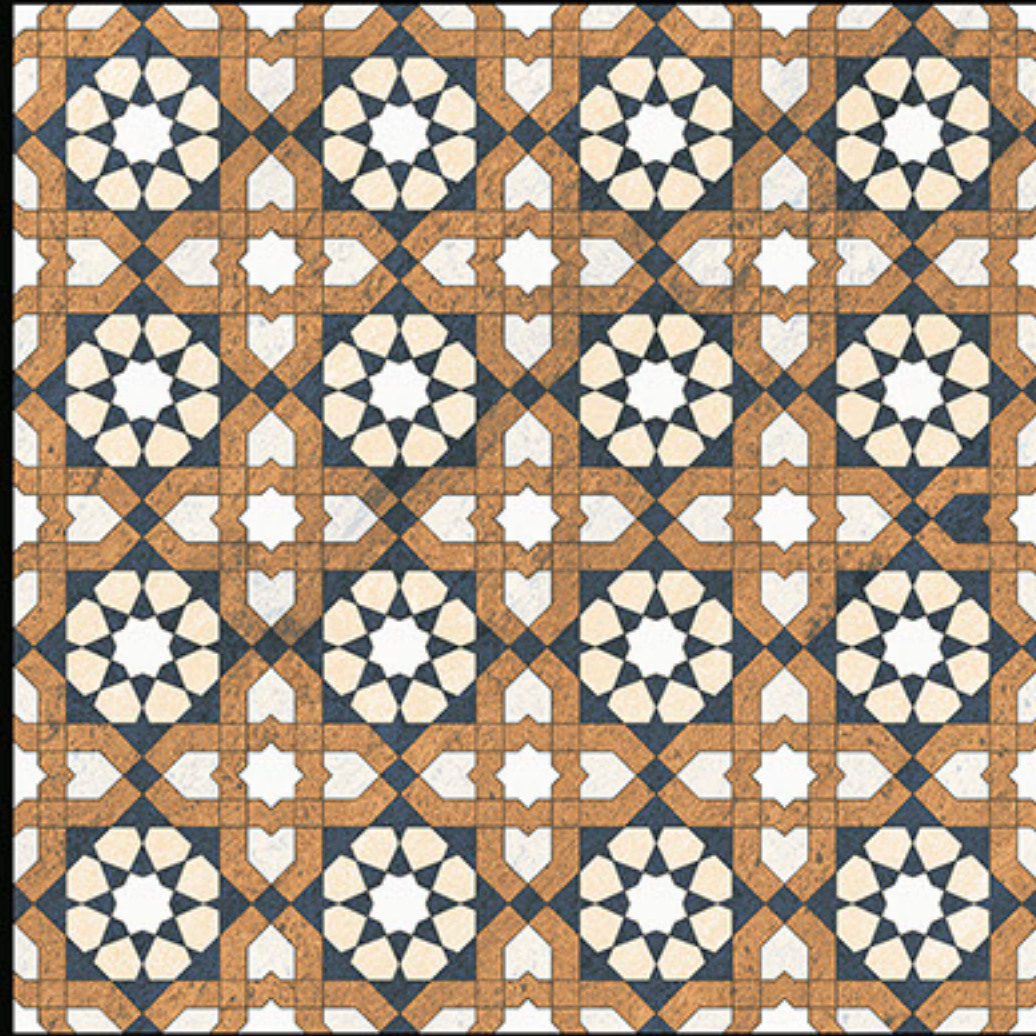


DESIGN NO-3319

LOYAL
— C E R A M I C



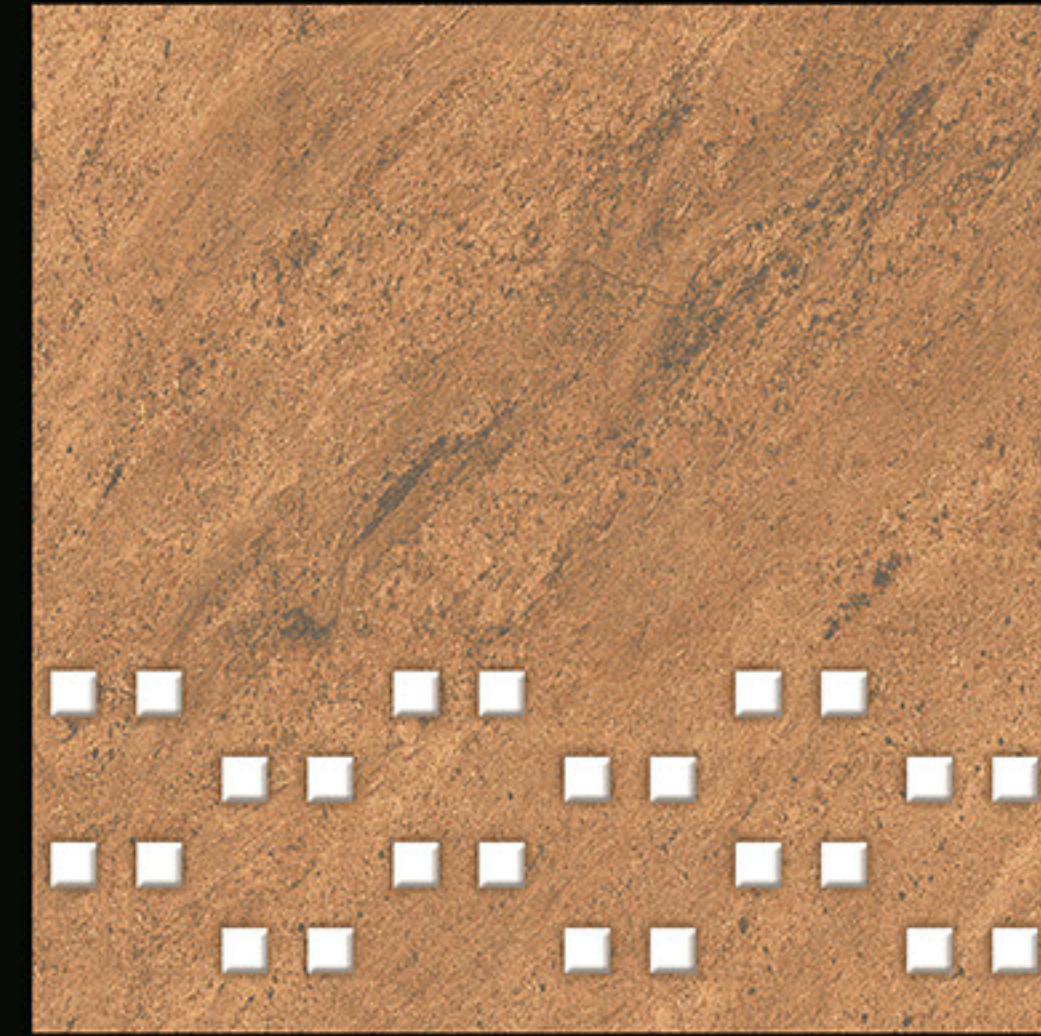
FULL BODY
300x300mm
VITRIFIED PARKING TILES



DESIGN NO-1620



DESIGN NO-2620



DESIGN NO-3320

FULL BODY
300x300mm
VITRIFIED PARKING TILES



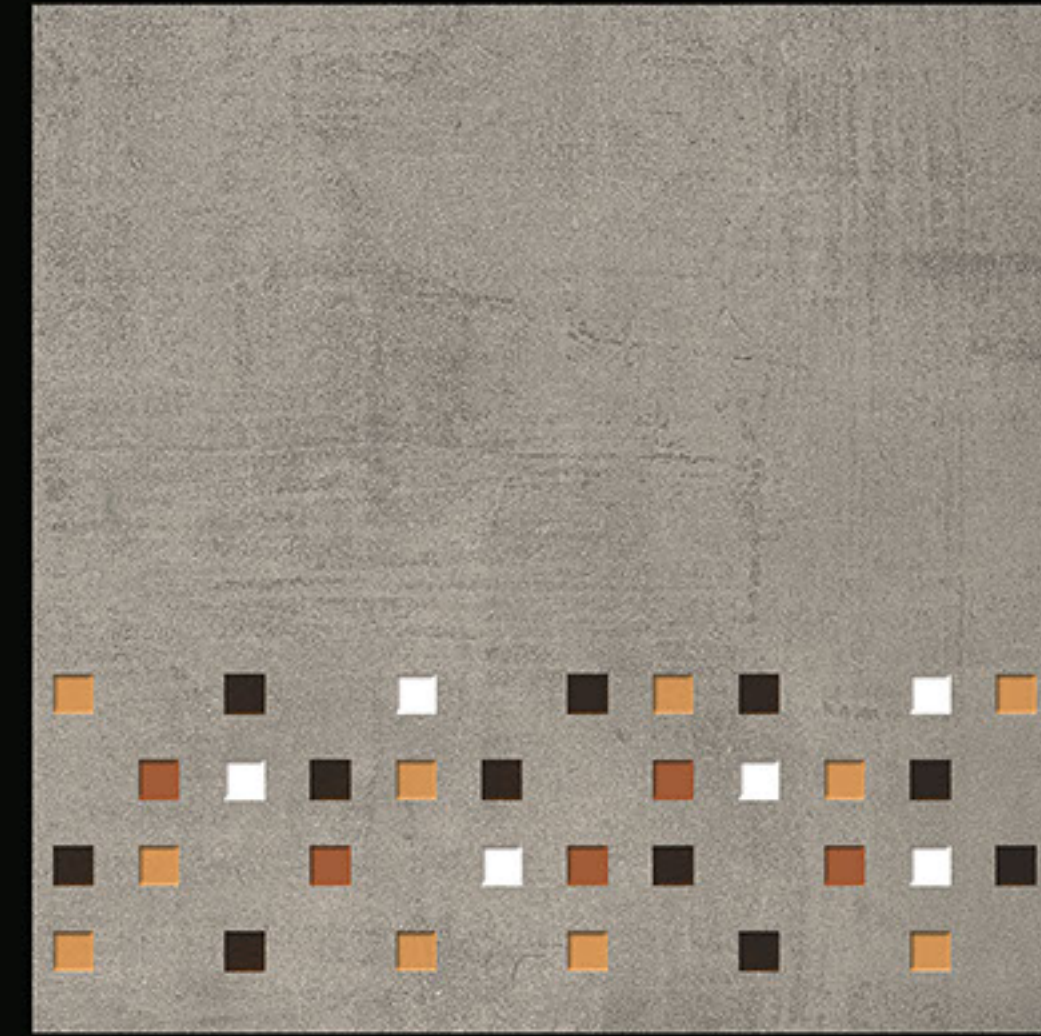
FULL BODY
300x300mm
VITRIFIED PARKING TILES



DESIGN NO-1621



DESIGN NO-2621



DESIGN NO-3321



FULL BODY
300x300mm
VITRIFIED PARKING TILES



DESIGN NO-1622



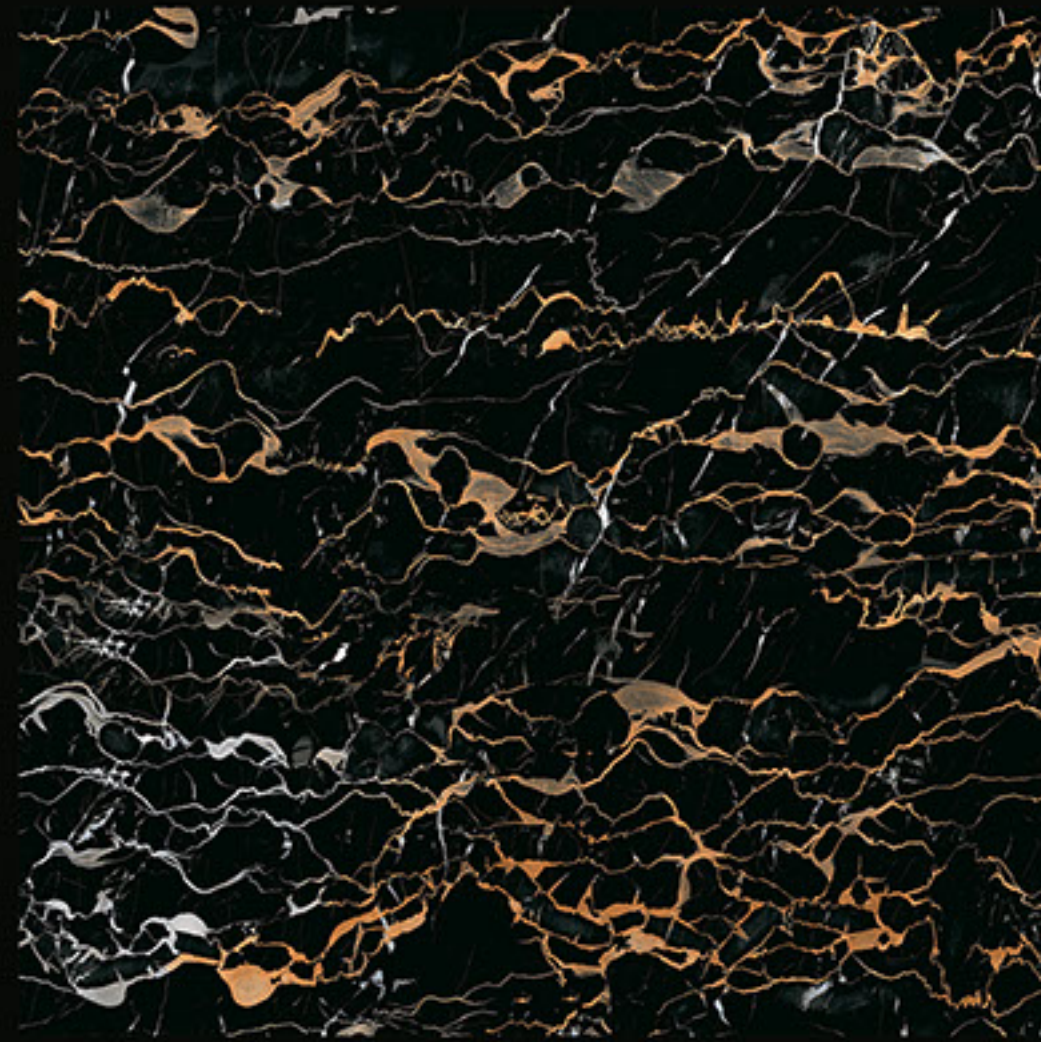
DESIGN NO-2622



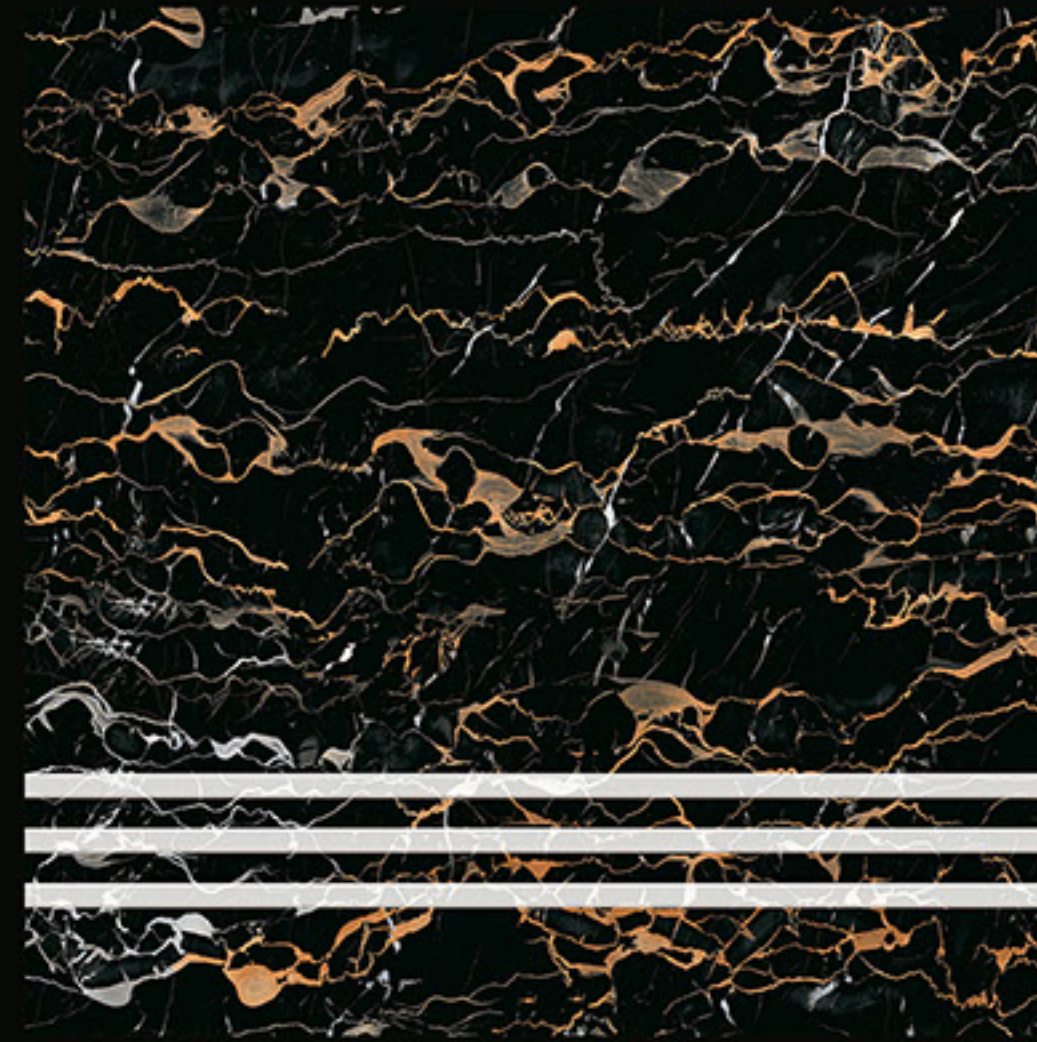
DESIGN NO-3322



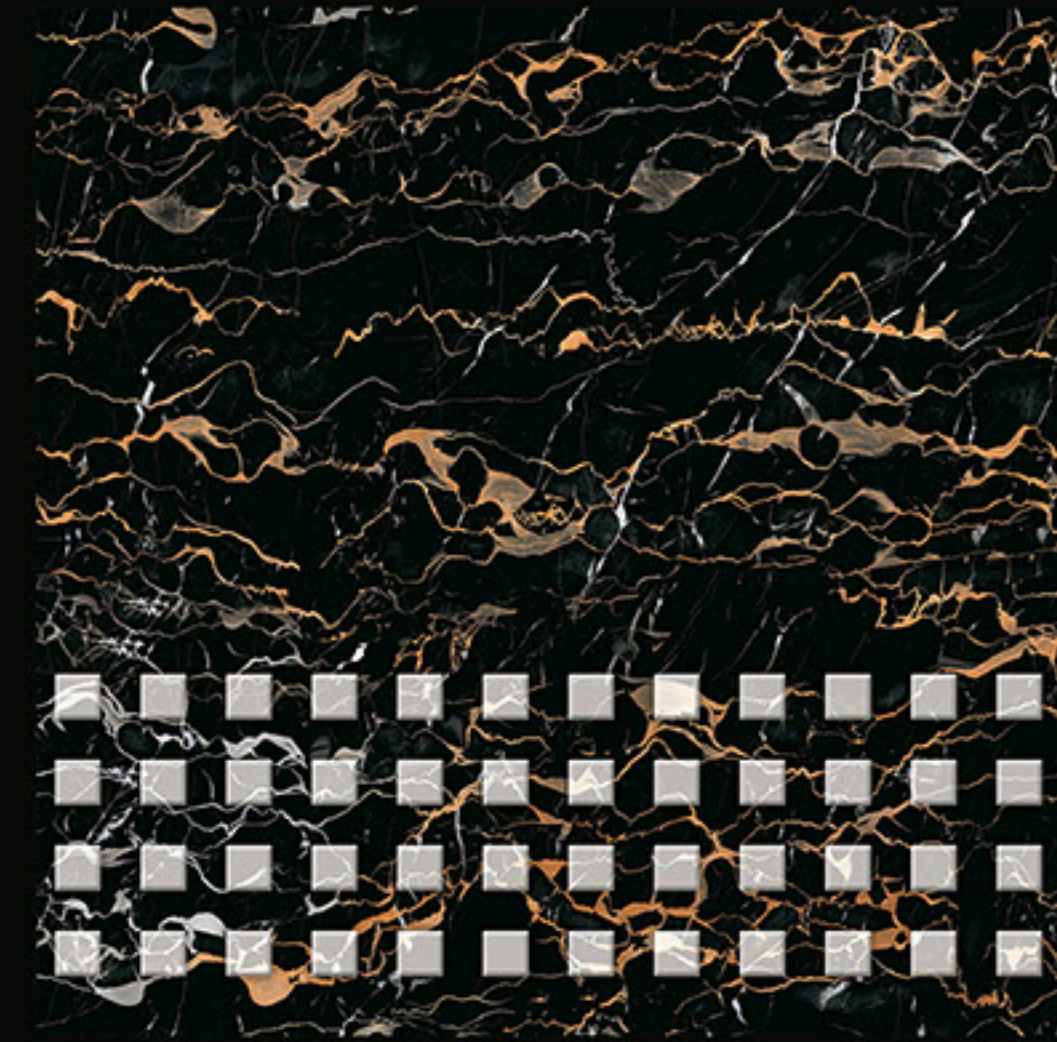
FULL BODY
300x300mm
VITRIFIED PARKING TILES



DESIGN NO-1623



DESIGN NO-2623



DESIGN NO-3323

FULL BODY
300x300mm
VITRIFIED PARKING TILES

LOYAL
— C E R A M I C



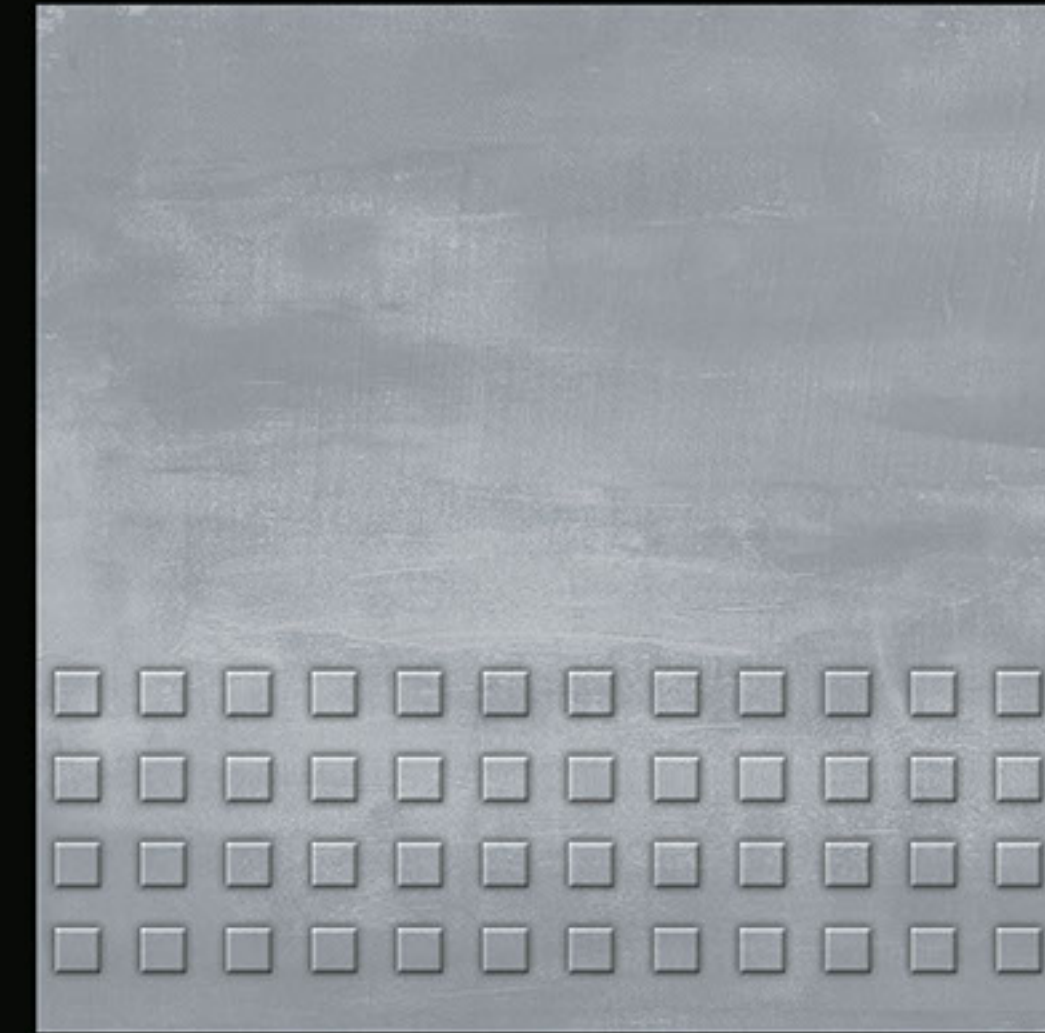
FULL BODY
300x300mm
VITRIFIED PARKING TILES



DESIGN NO-1624



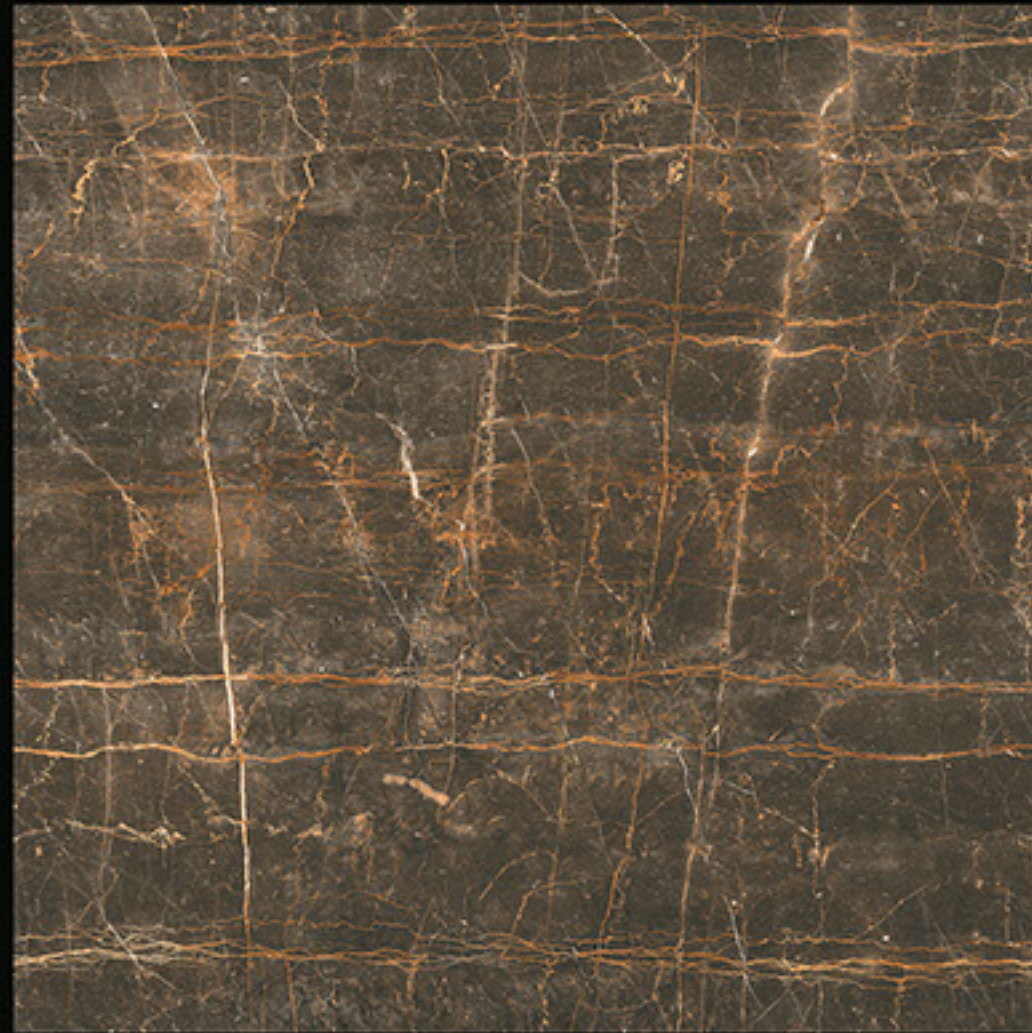
DESIGN NO-2624



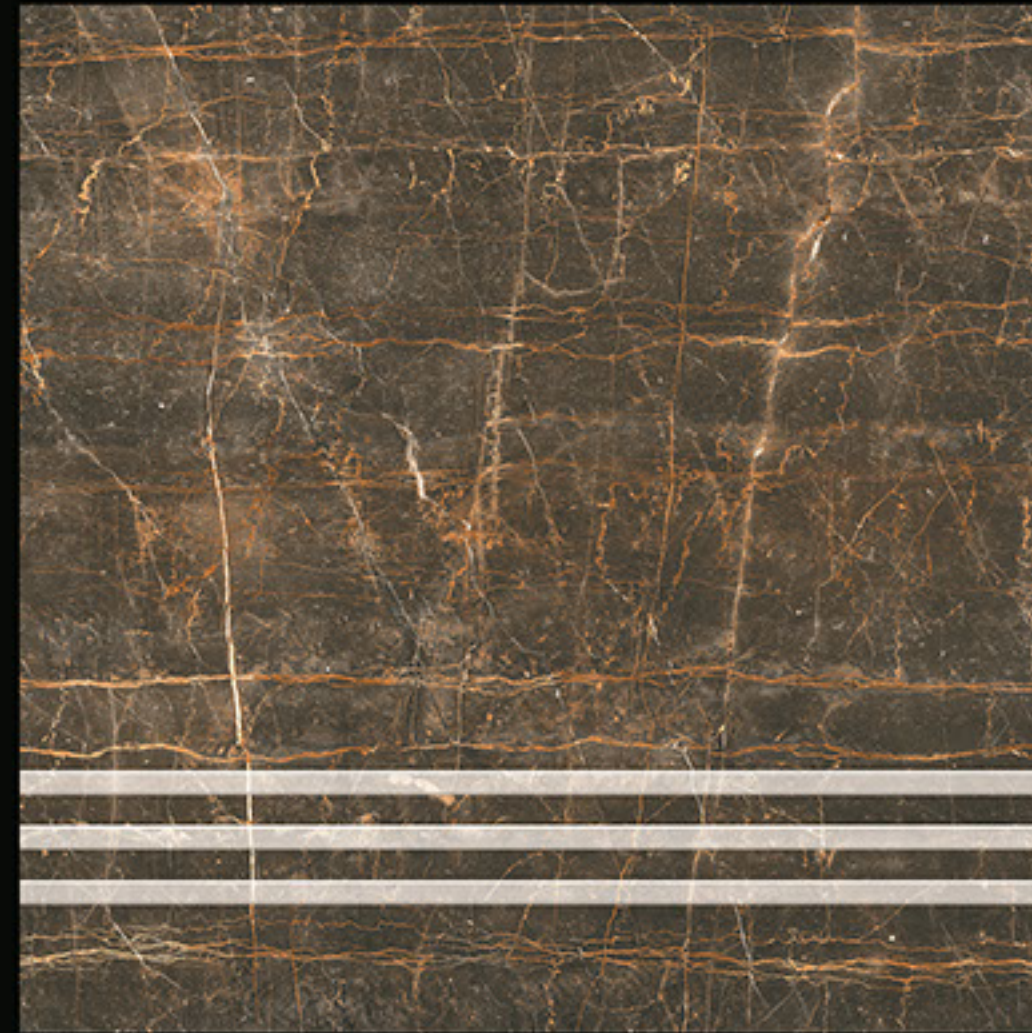
DESIGN NO-3324



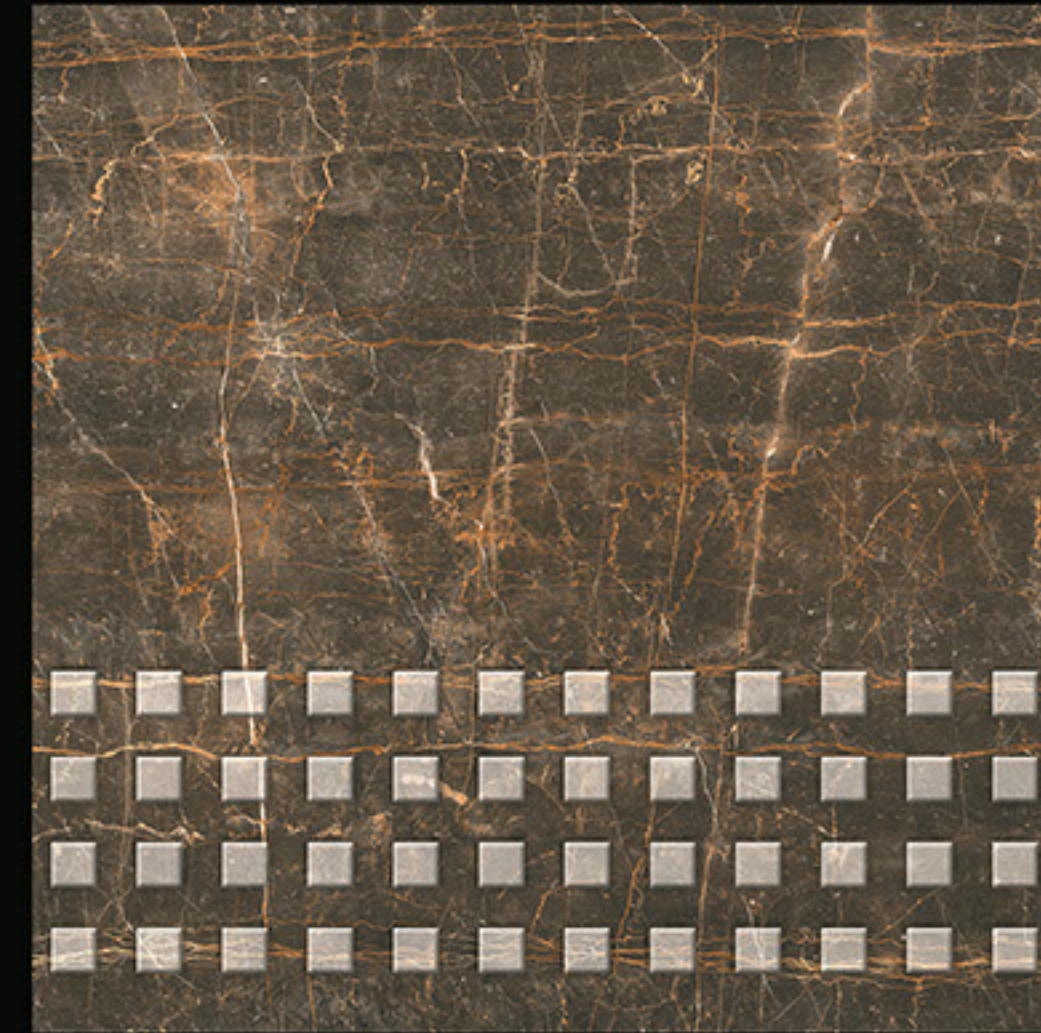
FULL BODY
300x300mm
VITRIFIED PARKING TILES



DESIGN NO-1625



DESIGN NO-2625

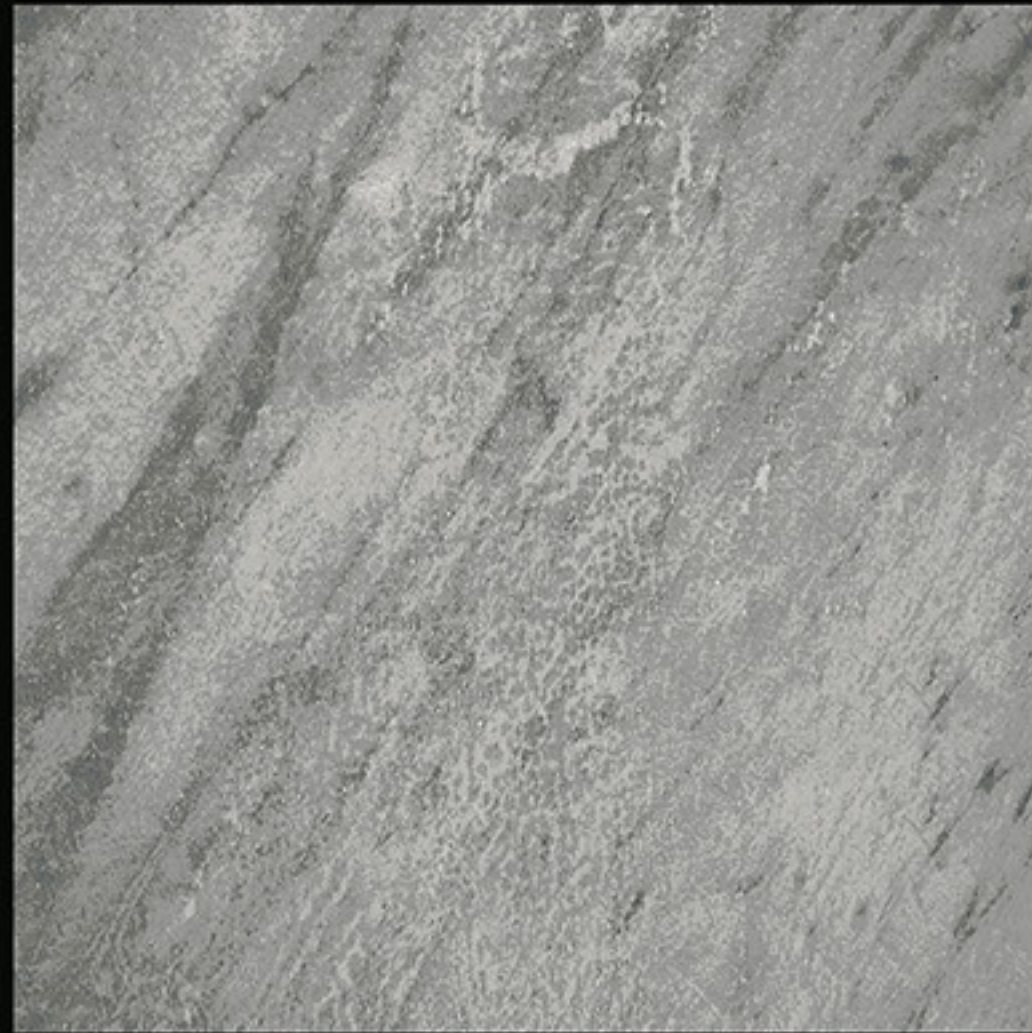


DESIGN NO-3325

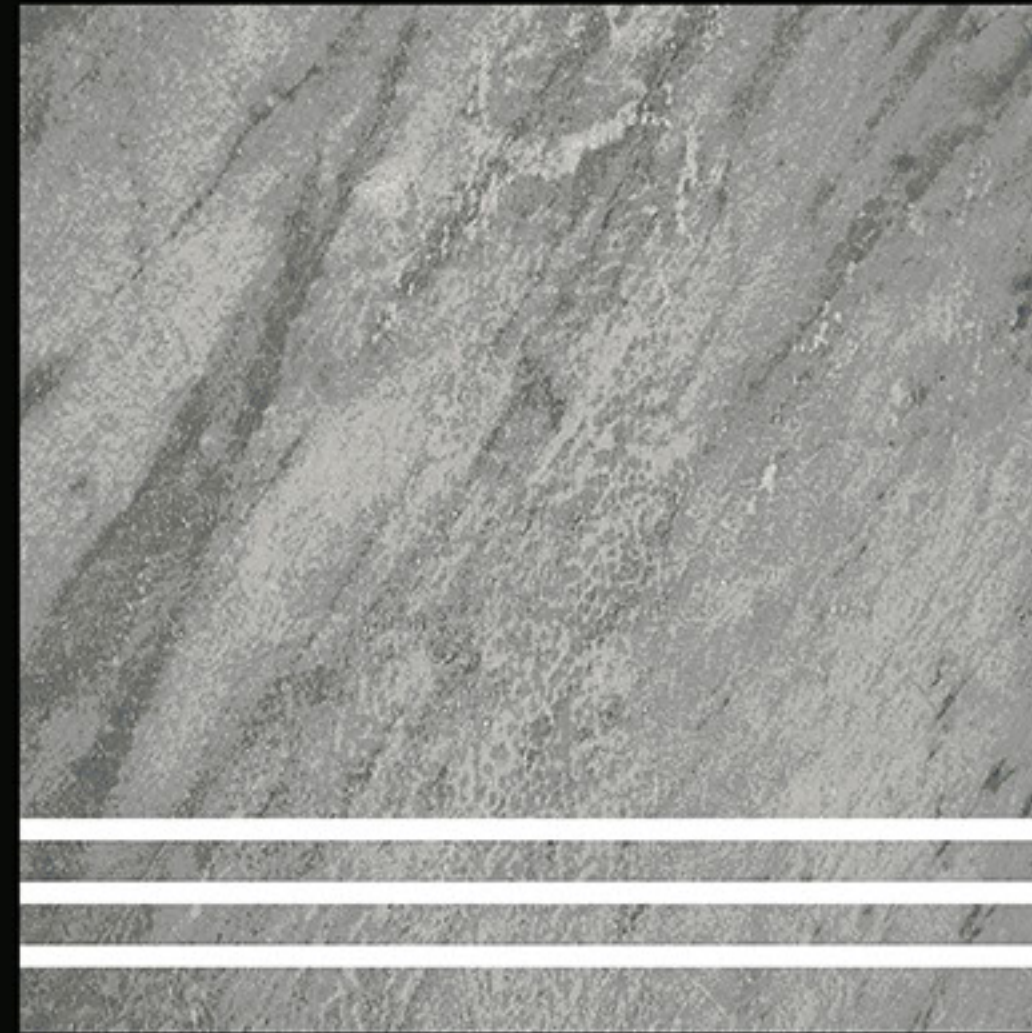
FULL BODY
300x300mm
VITRIFIED PARKING TILES



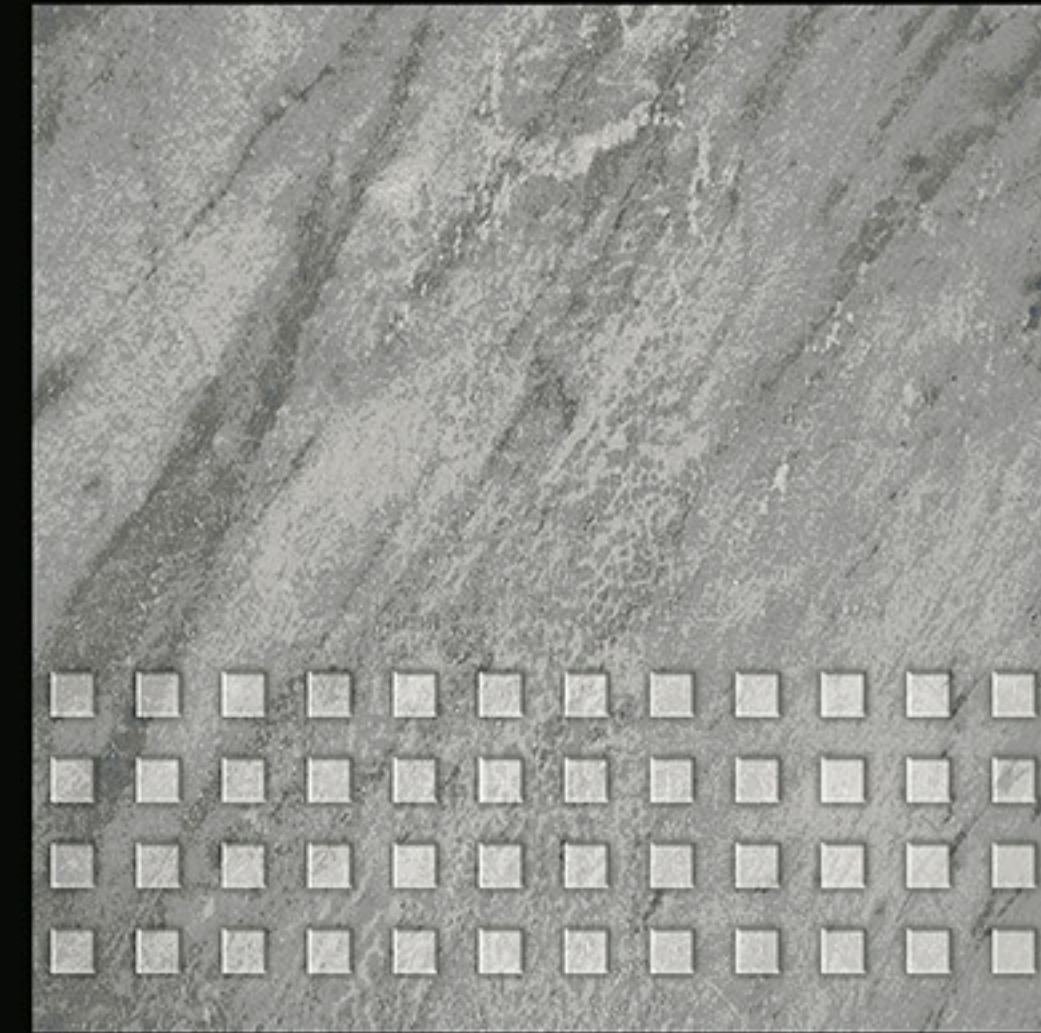
FULL BODY
300x300mm
VITRIFIED PARKING TILES



DESIGN NO-1626



DESIGN NO-2626



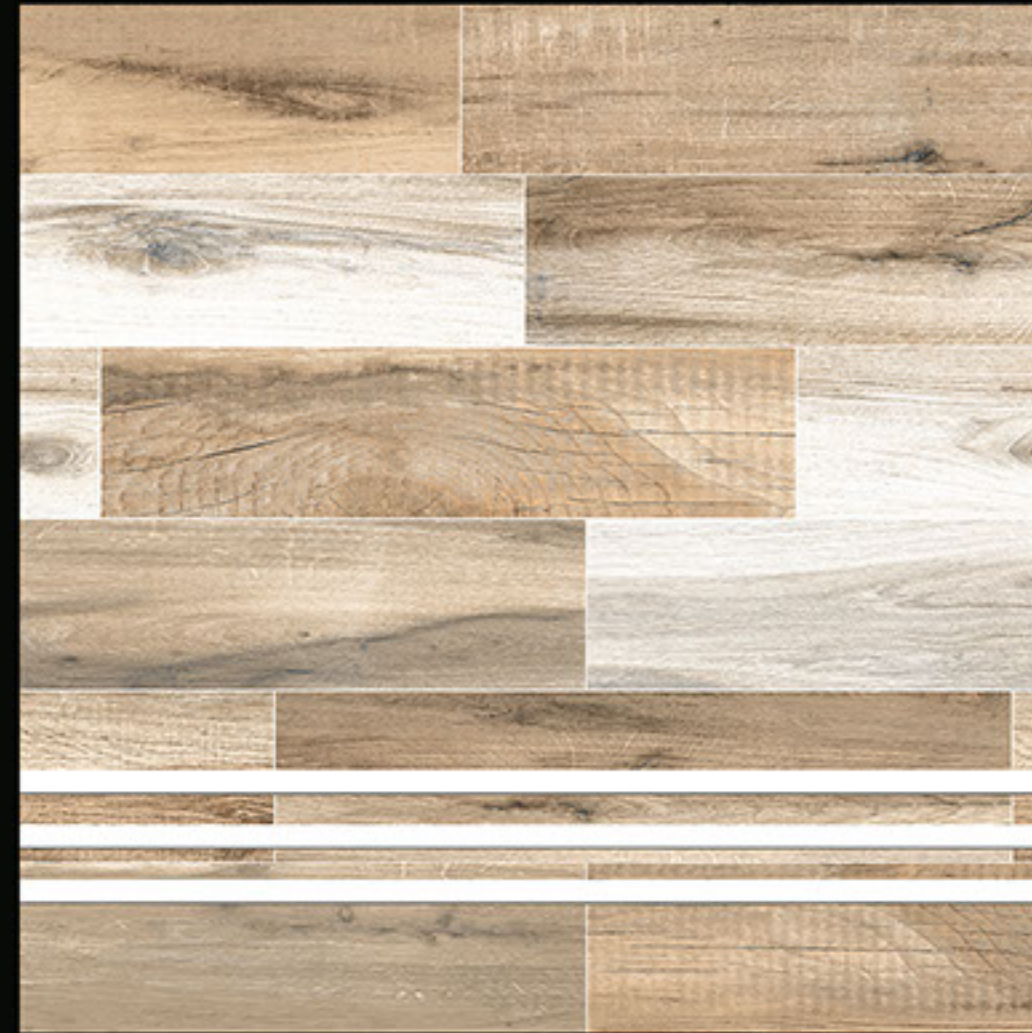
DESIGN NO-3326



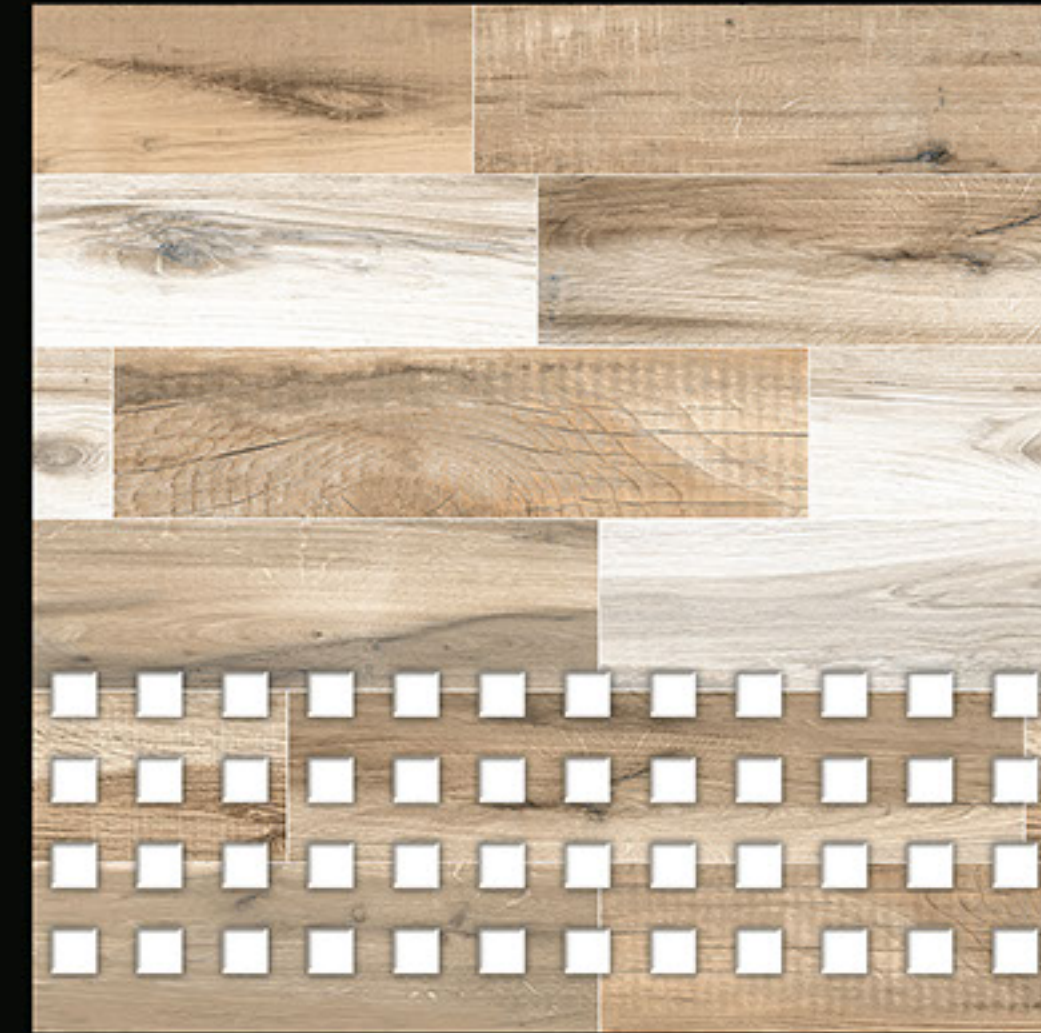
FULL BODY
300x300mm
VITRIFIED PARKING TILES



DESIGN NO-1627



DESIGN NO-2627



DESIGN NO-3327

LOYAL
— C E R A M I C



FULL BODY
300x300mm
VITRIFIED PARKING TILES

Thank
You!

✱ **Packing Details** ✱

Sr. No.	Size	Nominal Thickness	Number Of Tiles	Area	Weight
01	Ordinary 300x300mm	8 To 8.50mm(Approx)	08 Pieces Per Box	0.72 Sq. Mtr.	12 Kg.(Approx)
02	Digital 300x300mm	8 To 8.50mm(Approx)	08 Pieces Per Box	0.72 Sq. Mtr.	12 Kg.(Approx)

LOYAL CERAMIC LLP

Survey No. 728/p1,
Near Sanjivani Ceramic,
Behind Antique Granito,
Lakhdhirpur Road,
Morbi – 363642